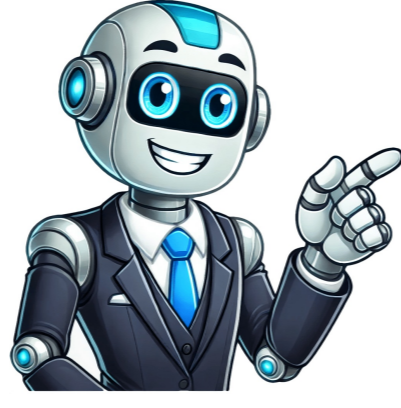


I'm not a robot



























Skip Navigation Skip Administration Forum administration Module administration Skip Navigation Skip Administration Forum administration Module administration Skip latest news Every summer Learn is 'rolled over' for the next academic year. This means that modules are recreated on a new version of Learn, with student interactions from previous year removed (such as forum posts and assignment submissions). The content on the majority of taught modules is automatically hidden pending review (and updating as appropriate) by module leaders in readiness for the new academic year. All modules from the current academic year are copied to an archived version of Learn (Learn24). How does this affect me? This year the rollover is scheduled for Sunday 6th and Monday 7th July. Learn is scheduled to be unavailable from 6:00pm on Sunday 6th July through to 5:00pm on Monday 7th July. We always aim to complete the rollover process as soon as we can and usually return the Learn system to normal service within 24 hours. Anyone visiting Learn during this period will be greeted with a message explaining the downtime, and we will keep the site updated throughout the procedure. During the rollover, a copy of the current system is taken and this creates the "Learn Archive" for the previous 2024/25 academic year. Material in the Learn archive is only available to those students and staff who were registered on the module during that academic year. The new Learn archive (Learn24) should become available during the morning of Monday 7th July. You will need to connect to the VPN in order to access the Learn archives if you are not on campus. Further information is available at [The new version of Learn is created as a copy of the previous year's version, with the previous year's student participation removed. Module content uploaded by staff is not removed. Colleagues should note that, as has happened in previous years, module content in modules in the new version of Learn will be set to 'hidden' by default and we ask that modules are suitably configured for the new academic year. Module leaders will therefore need to check their modules before the start of the academic year to review/updates/amend content and display resources as appropriate. As part of this year's rollover, there will be a new look and feel to Learn, developed in response to student and staff feedback. You can read more about this, and watch a short video introduction at \[Discuss this topic\]\(#\). \(0 replies so far\) Older topics... Skip module categories Skip Login Skip Navigation Skip Help & Support Skip Online Users Skip Navigation From Monday 28th June, all students will need to use multi-factor authentication to access online University services when off campus, such as your email account, VPN, MyResults, and Learn. In preparation for the roll-out of MFA, students can enrol by downloading and installing the Duo Mobile app on their mobile device: 1. Download the Duo Mobile app from the Apple App Store or Google Play 2. Open up your browser and type in \[duo.lboro.ac.uk\]\(http://duo.lboro.ac.uk\) 3. Log in using your University username and password and follow the on-screen instructions. 4. Enable push notifications on your smart device so you can approve requests for authentication. You are now set up ready for service launch date! Help & Support Step by step video instructions . Alternatively, the IT support team will be located outside the University Library to assist with device enrolment and answer any questions you may have about MFA - just look out for the IT Services purple tent! The team will be available from 11am - 2pm on the following dates: Tuesday 15th June Thursday 17th June Monday 21st June Wednesday 23rd June Friday 25th June Monday 28th June Wednesday 30th June Friday 2nd July For more information about Multi-Factor Authentication, please visit: \[Learn Page 2 Skip Navigation\]\(#\)](#)