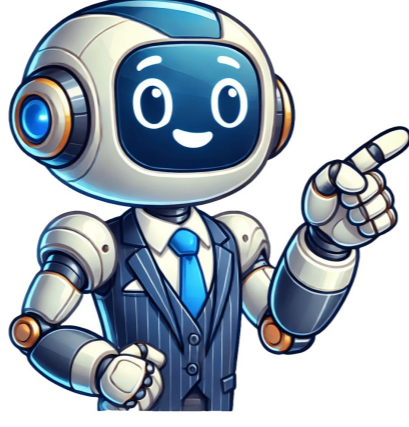


I'm not a robot



Gumbo pop strain

Gumbo Pop is an indica-dominant hybrid strain that packs a powerful punch with THC levels ranging from 17% to 25%. This popular strain, combining OG Kush and Blueberry genetics, delivers a distinctive sweet bubblegum flavor profile complemented by earthy undertones and fruity notes. Users experience deep relaxation alongside subtle energetic effects, making it perfect for evening use. Known for its medical benefits, the Gumbo Pop strain effectively manages chronic pain, reduces stress, and aids with sleep disorders. Its dense, resin-rich buds showcase mint-green coloring with striking orange hairs and a frosty trichome coating. The strain's unique combination of effects and flavors offers an intriguing expedition into modern cannabis cultivation. Key Takeaways Gumbo Pop is an indica-dominant hybrid strain combining OG Kush and Blueberry genetics with THC levels ranging from 17-25%. The strain delivers deep relaxation with subtle energy, making it suitable for evening use while offering pain and stress relief. Distinctive flavor profile features sweet bubblegum, earthy undertones, and fruity notes, with a complex terpene makeup including myrcene and limonene. Dense, resin-rich buds display mint and olive green colors with orange hairs and sparkling trichomes beneath a frosty exterior. Medical benefits include chronic pain management, stress reduction, and improved sleep quality, reported by 23-30% of users. Genetic Lineage The genetic lineage of Gumbo Pop reveals a carefully crafted hybrid strain that combines the strong characteristics of OG Kush and Blueberry genetics. This indica-dominant hybrid showcases the best qualities of both parent strains, resulting in a unique flavor profile that has cannabis enthusiasts buzzing with excitement. Through precise breeding, cultivators have developed a Gumbo strain that consistently delivers THC levels between 17% and 25%, making it adaptable for various consumption preferences. The genetic lineage is particularly noteworthy for its ability to blend the calming properties inherited from OG Kush with the sweet, aromatic notes passed down from its Blueberry ancestry. This strategic combination has led to several successful variants, including Gumbo Runtz, which continues to build upon this impressive genetic foundation. THC/CBD Content Precise laboratory testing reveals that Gumbo Pop consistently produces THC content between 17% and 25%, positioning it as a moderately potent to highly potent cannabis strain. As an indica-dominant hybrid, it offers users a strong combination of psychoactive effects while maintaining a balanced profile. The CBD levels in Gumbo Pop typically remain below 1%, which might not appeal to those specifically seeking CBD-focused strains. However, this particular THC-to-CBD ratio creates an excellent collaboration, producing both therapeutic benefits and enjoyable recreational effects. While experienced users often appreciate the strain's potency, newcomers should approach with caution and start with lower doses. The strain's composition can provide relief from various ailments while inducing a pleasant euphoric state, making it a versatile choice for both medicinal and recreational purposes. Terpene Profile Gumbo Pop's terpene profile showcases a harmonious blend of sweet bubblegum, earthy, and fruity notes, creating a distinctive aromatic signature. This unique blend of flavors is further enhanced by subtle hints of pine and pepper, adding depth and complexity to the overall experience. The rich terpene profile features prominent compounds like myrcene, which contributes to its relaxing effects, and limonene, known for its mood-enhancing properties. Additionally, the presence of caryophyllene offers potential benefits through its anti-inflammatory properties, making this strain particularly interesting for medical users. These carefully balanced terpenes work together to deliver a sophisticated sensory experience that sets Gumbo Pop apart from other strains, appealing to both recreational users seeking flavor and those interested in the therapeutic aspects of cannabis. Effects Experiencing Gumbo Pop's effects typically begins with a wave of deep relaxation that gradually envelops both mind and body. This strain offers a unique combination of calming effects while maintaining a subtle energizing undertone, perfect for evening relaxation without immediate sedation. Promotes deep relaxation and sleepiness, making it ideal for nighttime use Stimulates appetite, commonly leading to munchies Provides effective pain relief for approximately 30% of users Delivers stress-reducing properties for mental well-being Features mild energizing aspects despite its relaxing nature Users should note common side effects include dry mouth, dry eyes, and occasional dizziness. The medical benefits of Gumbo Pop are particularly notable for those seeking natural pain management solutions, while its stress-relieving properties make it a go-to choice for unwinding after a demanding day. Medical Uses Beyond its recreational appeal, the medical applications of Gumbo Pop have garnered significant attention within therapeutic communities. Medical marijuana patients frequently resort to this Gumbo strain for its diverse therapeutic benefits, with chronic pain management being a standout characteristic reported by 30% of users. The strain's effectiveness extends to stress reduction, helping approximately 29% of patients achieve a more balanced state of mind. For those struggling with sleep disorders, Gumbo Pop offers promising insomnia relief, as documented by 23% of users who experience improved sleep quality. The strain's indica-dominant properties contribute to its anxiety-reducing and mood-enhancing effects, making it a versatile option for various conditions. However, it's essential for potential users to consult with healthcare professionals before incorporating this strain into their treatment regimen. Flavor and Aroma A distinctive bubblegum sweetness defines the sensory profile of Gumbo Pop, creating an immediately recognizable experience for cannabis enthusiasts. This Gumbo strain expertly combines sweet and earthy notes in its aroma, presenting a complex bouquet that delights the senses. Key flavor and aroma characteristics include: Prominent bubblegum sweetness as the dominant note Earthy undertones that provide depth and complexity Subtle hints of ammonia and sage Citrus and pine subtleties that emerge during consumption A remarkably smooth finish that enhances enjoyment The harmonious blend of these elements creates a sophisticated flavor profile that sets Gumbo Pop apart from other strains. Cannabis connoisseurs particularly appreciate how the sweet, candied notes play against the deeper, more natural elements, resulting in a truly memorable sensory experience. Appearance While the aromatic profile of Gumbo Pop enchants the nose, its visual presentation proves equally impressive. The Gumbo strain showcases an array of vivid mint and olive green buds, beautifully accented by eye-catching orange hairs that weave throughout the colorful nugs. What makes this strain particularly striking is its dense, resin-rich appearance, enhanced by a generous coating of sticky trichomes that glisten under light. Adding to its visual allure, this captivating strain often displays subtle purple and blue undertones beneath its frosty exterior. The abundance of crystals creates a sparkling, almost jewel-like quality that's characteristic of premium indica-dominant varieties. These aesthetic features not only make Gumbo Pop visually distinctive but also serve as indicators of the strain's potency and careful cultivation. Grow Information Cultivating Gumbo Pop requires moderate skill and careful attention to environmental factors, making it an engaging challenge for intermediate growers. This Gumbo strain flourishes in warm climates, with controlled greenhouse environments offering optimal growing conditions for success. Key growing characteristics include: Moderate growing difficulty, perfect for those ready to advance their cultivation skills Flowering period of 8-10 weeks, requiring patient and consistent care Indoor height reaches 30 inches, while outdoor plants can grow up to 80 inches Impressive outdoor yield of 15-20 ounces per plant Regular pruning necessary to maintain plant health and prevent mold issues For best results, growers should maintain proper humidity levels and implement strategic pruning techniques to guarantee healthy development and maximize yields in both indoor and outdoor settings. Adverse Effects Safety considerations and awareness of potential side effects are essential when consuming Gumbo Pop, as users commonly report several adverse reactions. The most frequently encountered adverse effects include dry mouth and dry eyes, which, while uncomfortable, are typically manageable with proper hydration and eye drops. Users should exercise caution regarding the strain's potent couch-lock effect, which can significantly impair physical activities and concentration. Additionally, some individuals may experience dizziness, particularly when consuming larger doses than recommended. Those prone to cannabis sensitivity should be especially mindful, as Gumbo Pop can trigger anxiety or paranoid thoughts in susceptible users. Another consideration is the strain's tendency to stimulate appetite, which might lead to unwanted overeating if users aren't consciously monitoring their food intake. Comparisons with Similar Strains Understanding how Gumbo Pop compares to similar cannabis strains helps users make informed consumption choices. While derived from the original Gumbo strain, Gumbo Pop has established its own unique characteristics, particularly in terms of potency and flavor profile. Features enhanced sweetness and THC levels exceeding 25%, distinguishing it from its parent strain Combines the fruity elements of Blueberry with OG Kush's relaxing effects Shares sedative properties with Purple Gumbo but lacks the grape undertones Produces couch-lock effects similar to Cherry Gumbo but with a distinctive bubblegum taste Contrasts sharply with energizing strains like Green Crack, making it ideal for evening use While effects of the strain can vary between individuals, Gumbo Pop consistently delivers powerful relaxation effects. As with any cannabis product, consult medical advice before use. Research and Studies Research into Gumbo Pop sheds light on its genetic composition as an indica-dominant hybrid, with studies confirming a 60-65% indica and 35-40% sativa ratio. This genetic profile contributes significantly to its therapeutic applications, particularly in managing chronic pain and sleep disorders. While specific research on Gumbo Pop remains limited, clinical studies have documented its THC level ranging from 17% to 25%, making it a potent option for potential medical use. User reviews consistently highlight its effectiveness in addressing anxiety and stress-related symptoms, suggesting promising therapeutic benefits. The strain's distinctive bubblegum-influenced terpene profile not only enhances the overall experience but may also contribute to its medicinal properties. This growing body of research continues to validate Gumbo Pop's position as a noteworthy addition to the medical cannabis environment. History and Origin The complete origins of Gumbo Pop remain shrouded in mystery, though cannabis cultivators trace its lineage to the original Gumbo strain family. This indica-dominant hybrid has emerged as a popular choice among enthusiasts, distinguishing itself through its unique flavor and aroma profile. Key characteristics that shaped its legacy: Descended from the original Gumbo strain lineage Developed as an indica-dominant hybrid with unknown parent strains Features distinctive sweet bubblegum flavoring Maintains moderate THC levels between 17-25% Known for consistent relaxing effects While its exact creation story remains unclear, Gumbo Pop has carved out its own identity in the cannabis community. The strain's reputation has grown steadily, particularly among those seeking evening relaxation, making it a worthy addition to the celebrated Gumbo family tree. Frequently Asked Questions What are the effects of the Gumbo Pop strain? Gumbo Pop typically produces a balanced high that combines euphoria with relaxation. Users often report feeling creative, uplifted, and calm, with a gentle euphoric lift that promotes a sense of well-being. The strain's effects are generally described as moderate in strength, making it suitable for both daytime and evening use. What does the Gumbo Pop strain smell and taste like? Gumbo Pop has a sweet and fruity aroma dominated by bubble gum notes, with hints of berries and tropical fruits. The flavor profile mirrors its scent, offering a delightful blend of sweet bubble gum with subtle earthy and spicy undertones. Some users also detect citrus and pine notes on the exhale, adding complexity to its overall taste experience. What is the genetic background of Gumbo Pop? It is an indica-dominant hybrid (60/35) created by crossing two unknown strains. While its exact lineage is not widely known, it's believed to inherit characteristics from strains that contribute to its unique bubble gum flavor profile. The strain is also known by other names such as Gumbo Runtz strain. What is the THC content of Gumbo Pop? The THC content of Gumbo Pop typically ranges from 17% to 21%, making it a moderately potent strain. This THC level contributes to its balanced effects and makes it suitable for both novice and experienced users. However, the exact THC content can vary depending on growing conditions and phenotypes. Gumbo is an enigma of the cannabis world: A flammable question mark rolled in mystery and ignited with curiosity. With an origin story that blends fact, theory, and legend, it may as well be referred to as the Sasquatch of Pot.Gumbo is concealed in obscurity, with no clear confirmation of who started it all. The original Gumbo strain genetics are also still up for question, though many believe it has strong kush roots. Its not unusual for breeders to adopt a well-known name when developing new phenotypes, often leading to many cultivars of the same name. This seems to be the case with the Gumbo weed strain. There isn't enough info to delve deeper into the early days of the original, so let's take a look at Gumbo as we know it today. The ILGM research team does its best to keep all information up to date, but some details may be unavailable. We will add new information as more becomes available.Here's what we know so far: Karim "Luka Brazl" Butler and Alexis Major developed Flytrap Gumbo, releasing their Gumbo cannabis strain under this brand. When discussing the Gumbo brand, Luka Brazl said, "It was a mix-up of a whole bunch of good different things in one pot. That's where the Gumbo came from". Since the successful rise of their Gumbo brand, they've collaborated with many other cultivators, creating a range of Gumbo-inspired collections. These collections all fall under the Gumbo umbrella and have taken the market by storm. Some of the names you can find within this "Gum-brella" are Lil Meech (Cotton Candy Gumbo, Blue Magic, and Call A Cab), N.O.R.E. (introducing the Cíviche Gumbo line), and Dex Lauper (with their F*ck You Gumbo line including Italian Ice and Brain Freeze).Cookies and Backpack Boys, as well as Jokes Up, have all released a Gumbo line that incorporates the Gumbo strain genetics with a range of other potent strains. Each of these Gumbo-inspired spin-offs retains some of the original Gumbo flair while introducing their genetic creations into the mix. Does all of this make it more difficult to pin down the exact details of Gumbo? Yes, it does. Are we complaining? Absolutely not. With very little info about the Gumbo strain genetics, its heritage is somewhat hazy. What we know for certain, however, is that this cultivar is a hard-hitting indica that has left its mark on people worldwide. Most of the strains under the Gumbo brand are categorized as indicas, with the exception of Cíviche Gumbo: Rose from the N.O.R.E collection. Gumbo marijuana strain attributes:ORIGINUnknownEFFECTSRelaxation, Calming, Euphoria and ArousalADVERSE REACTIONS (NEGATIVE)Dry mouth, Red eyes, Couch lock and an elevated AppetiteFRAGRANCESweet, Earthy, Skunkiness, Fruity and MuskyFLAVORSSweet, Bubblegum, Pine, Lavender and BerriesMEDICALChronic pain, Muscle spasms, Insomnia, Loss of appetiteFLOWERING TIME INDOORSUp to 9 weeksFLOWERING TIME OUTDOORSEarly to mid OctoberPLANT HEIGHTAllTHC CONTENT %20% - 25%CBD %< 1%INDICA / SATIVA %60 / 40INDOOR YIELD8-24 ouncesOUTDOOR YIELD16-64 ouncesCLIMATEWarm and Temperate climatesGROWTH LEVELEasyRESISTANCE TO DISEASEUnknownTERPENESb-Caryophyllene, b-Myrcene and PínenesGumbo Cannabis strain attributesGumbo strain info surrounding its growing habits is slightly hampered due to its uncertain genetic history. Plus, each collaboration adds a unique contribution to the breeding process, which can affect growing habits. That said, it's been established that Gumbo prefers growing in warm temperate climates. This makes it a favorite for indoor and greenhouse growers who have more control over climate and airflow. Having some growing experience will help you get the best out of your Gumbo strain seeds. If you're still new to growing, we have a great selection of beginner seeds you're sure to love. According to Flytrap, their Gumbo strain grows between 60 and 80 inches tall and produces rounded buds that range from deep green to pale lime. The nuggets are accentuated with amber pistils enveloped in a frosting of sticky crystal trichomes. Flowering occurs around the 8-9 week mark indoors. Outdoor growers recommend preparing for a mid-October harvest. Those who have successfully grown Gumbo report generating moderate yields indoors and outdoors. Disclaimer: The average yield of any cannabis plant depends on several factors, including the skill of the cultivator, growing conditions, strain genetics, and size and health of the plant. It also differs between photoperiod and autoflower plants. However, you can use general estimates as a potential yield per plant guideline. For photoperiod plants, this is 16-64 ounces (450-1814 grams) outdoors and 8-24 ounces (227-680 grams) indoors.Autoflowers don't require a change in the light cycle, making them considerably faster to grow. The first buds typically appear around four to six weeks and have a flowering time between four and ten weeks.Like most autoflowers, the Gumbo cannabis strain will be ready to harvest after ten to fourteen weeks with a potential yield per plant of 1.7-7 ounces (50-200 grams) outdoors and 1.7-4.2 ounces (50-120 grams) indoors.There are many things about Gumbo that we may never learn. What is abundantly clear, though, is its ability to turn even the most resilient of smokers into red-eyed fridge-raiders. This cultivar provides a long-lasting high that's not overwhelmingly intense, but what it does give, it gives generously. Ideal for a relaxing evening, catching up on some shows and unwinding, the Gumbo high fills you with a sense of calm, euphoria, and possibly even arousal. According to online Gumbo strain reviews, many consumers have turned to the hybrid as a means of coping with persistent pain, muscle spasms, insomnia, and loss of appetite. Gumbo strain effects can be mentally uplifting as well, filling you with a cerebral buzz that washes away stress and worries. You might experience dry mouth, red eyes, and an increased appetite, so plan accordingly. Couch lock is also possible, so if you plan on having a productive day, wake and bake is not recommended. On the other hand, if you have a series you've been meaning to binge hard, then Gumbo will be your best companion. Despite its hard-hitting, long-lasting highs, the Gumbo marijuana strain is a fantastic option for beginners and veterans alike. This hybrid crept from the shadows and ensnared loyal fans far and wide while slinging an average of 20%-25% THC content. This THC content may vary between cultivars, so always check before buying. Ultimately, it's your moderation (or lack thereof) that will determine how buzzed you get. Although the various Gumbo collections introduce a larger variety of flavors, the name Gumbo still brings to mind that alluring fragrance and sweet, bubblegum-like flavor. The dominant terpenes that make up this candy-esque flair are reported as b-caryophyllene, b-myrcene, and pínene. Pínenes contributes to the pine and floral elements, while b-caryophyllene adds the spicy cinnamon notes. Myrcene, which is one of the most common cannabis terpenes, provides earthy, fruity, and musky notes and is a known natural sedative. The terpene profile may differ between Gumbo cultivars.One of the best things to come out of the extended Gumbo range is the introduction of new flavors: With a swirl of gas, berry, and cream, Madison Square Gumbo displays the Cookies Fam touch. F*ck You Gumbo: Brain Freeze from the Dex Lauper collection delivers notes of peaches and cream. Cíviche Gumbo: Key Lime perfectly captures the flavors it is named for. Blue Magic by Lil Meech takes its flavor inspiration from the delectable Blue Dream.The original Gumbo weed strain brings a palette that's as potent as it is high, with a sweet, bubblegum-like flavor with a hashy undertone. Intertwined in the bubblegum are subtle tones of pine, lavender, and berries. Its aroma, much like the flavor, is intensely sweet with earthy tones and a clear skunkiness. This flavor is so similar to the treat Gumbo Ballgum that many believe this is how the Gumbo marijuana strain got its name. While there's still much to discover about Gumbo, its growing popularity is undeniable. Driven by its tantalizing flavors and a high that eases your body while uplifting the mind, it has quickly become the go-to strain. From rappers and celebrities to cannabis enthusiasts - everybody wants a piece of Gumbo.Whether it's a select cut from the Gumbo brand or a genetically crafted Jokes Up version, Gumbo is flying off the shelves. Magical strains like Gumbo don't just fall out of the sky. They get developed by breeders who have honed their craft, done their homework, and learned the ropes. But still, all their best creations started with 1 seed. If you want to get that first seed to launch you on your cultivation journey, visit our ILGM seed bank for a cultivar that suits you best. While you're at it, sign up, and you can stay up to date with all our latest cannabis seed deals. Below you can also find a link to our complete grow kit, so you can start growing as early as next week!Happy Growing!!