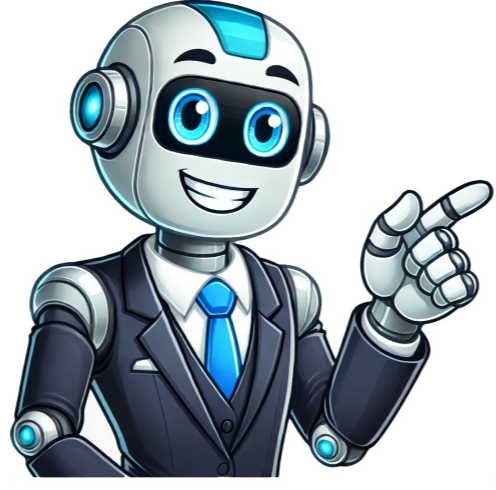


Continue





























The lint filter prevents fluff from blocking the dryer hose. We recommend cleaning the filter after every cycle, to prevent blockage. To clean the lint filter follow the steps below-1. Open the dryer door and locate the filter (look behind and under the door).2. Pull out the two-part fluff filter.3. Remove the fluff from the recess in the fluff filter.4. Pull apart the two-part filter.5. Open both filters and remove the fluff.6. Optional: Rinse away any remaining fluff under running water.7. Dry the filters with a cloth or paper towel.8. Re-assemble the filter.9. Reinsert the two-part filter back into position.To effectively remove unpleasant smells and odours, we recommend also using the Care Product for Tumble Dryers shown below. If your fluff filter is damaged, you can search for a replacement using our spare parts search. Reddit and its partners use cookies and similar technologies to provide you with a better experience. By accepting all cookies, you agree to our use of cookies to deliver and maintain our services and site, improve the quality of Reddit, personalize Reddit content and advertising, and measure the effectiveness of advertising. By rejecting non-essential cookies, Reddit may still use certain cookies to ensure the proper functionality of our platform. For more information, please see our Cookie Notice and our Privacy Policy. Maintaining your Bosch heat pump dryer is crucial for its optimal performance and longevity. Cleaning it regularly removes lint, dust, and debris that can accumulate over time, potentially affecting its efficiency and increasing the risk of fire hazards. Here's a comprehensive guide on how to clean your Bosch heat pump dryer thoroughly and effectively. Gather Necessary Tools Before you begin, gather the following tools: Soft cloth or sponge Vacuum cleaner with brush attachment Lint brush Damp cloth Mild dish soap or laundry detergent Screwdriver (optional) Safety Precautions Always unplug the dryer from the power outlet before cleaning. Allow the dryer to cool down completely before cleaning to prevent burns. Wear gloves to protect your hands from chemicals or sharp edges. Step 1: Clean the Lint Filter Locate the lint filter inside the dryer door, usually at the bottom. Remove the filter and use a vacuum cleaner with a brush attachment to remove all lint and debris. Rinse the filter under running water to remove any remaining dust or particles. Allow the filter to dry completely before reinserting it into the dryer. Step 2: Clean the Lint Screen Open the dryer door and locate the lint screen on the inside of the door frame. Remove the lint screen and use a vacuum cleaner or lint brush to remove all lint and debris. Rinse the lint screen under running water to remove any remaining particles. Allow the lint screen to dry completely before reinserting it into the dryer. Step 3: Clean the Condenser The condenser is located at the bottom of the dryer, behind the kick plate. Use a screwdriver to remove the kick plate. Carefully remove the condenser by pulling it out slightly and lifting it up. Use a vacuum cleaner with a brush attachment to remove all lint and debris from the condenser. Rinse the condenser under running water to remove any remaining particles. Allow the condenser to dry completely before reinserting it into the dryer. Step 4: Clean the Drum Use a damp cloth to wipe down the inside of the dryer drum, removing any lint, dust, or debris. If there is any stubborn dirt or stains, apply a small amount of mild dish soap or laundry detergent to the cloth and wipe the drum again. Rinse the drum thoroughly with a clean damp cloth to remove any detergent residue. Use a soft cloth or sponge dampened with mild dish soap or laundry detergent to wipe down the exterior of the dryer, including the control panel and door. Rinse the cloth or sponge with clean water and wipe the exterior again to remove any detergent residue. Dry the exterior thoroughly with a clean cloth. Locate the exhaust vent on the outside of your home, where the dryer vent hose connects. Disconnect the vent hose from the dryer and remove any lint or debris that may have accumulated inside. Use a vacuum cleaner with a brush attachment to clean the inside of the exhaust vent. Reattach the vent hose to the dryer and secure it properly. Reinsert the condenser, lint screen, and lint filter into the dryer. Replace the kick plate and secure it with the screws. Plug the dryer back into the power outlet. Run an empty cycle on the highest heat setting for 10-15 minutes to remove any remaining moisture or debris. Regular cleaning of your Bosch heat pump dryer provides several benefits: Improved efficiency: Clean dryers operate more efficiently, reducing energy consumption. Increased lifespan: Removing lint and debris prevents premature wear and tear on the dryer's components, extending its lifespan. Reduced fire risk: Lint accumulation can pose a fire hazard. Regular cleaning removes this risk. Fresh-smelling laundry: Clean dryers prevent musty odors from accumulating on your clothes. Information You Need to Know 1. How often should I clean my Bosch heat pump dryer? Every 3-6 months, depending on usage frequency. 2. Can I use harsh chemicals to clean my dryer? No, avoid using harsh chemicals as they can damage the dryer's components. 3. What if my dryer is still not drying clothes efficiently after cleaning? Check the exhaust vent for blockages or damage. Contact a qualified appliance repair technician for further assistance. Your browser is out of date. For more security, speed and best experience on this page please update your browser or use a different one Your Bosch dryer gives you fresh and fluffy laundry that's ready to go back in your wardrobe before you know it. Cleaning your dryer correctly is the best way to keep it in good working order. There are various parts of your dryer that need to be cleaned. We have put together the best tips to help you keep your appliance in good working order and assist you if it ever stops working. Move your tumble dryers rotary selector to the "OFF" position. Please make sure you let the dryer cool down before cleaning it. After the dryer has been in use for a long time, it still can be hot. Cleaning the filter inside your dryer is a straightforward task. Open the dryer door and remove all fluff from the door.Pull out the lint filter.Remove the fluff from the trough of the fluff filter and make sure that no fluff falls into the open shaft.Open the lint filter and remove all lint.Rinse the lint under running water or clean the lint filter in the dishwasher. In the video, the experts at Bosch Home Appliances will tell you what you need to bear in mind. The video gives you valuable pointers on cleaning your dryer's filter. Please note that you should clean the dust filter after each use. Empty the condensation water container after each drying cycle, otherwise the next drying programme can be aborted, because the condensation water tank is full. Pull the condensation water tank horizontally outPour out the condensation water.Push the condensation water container back into the dryer until it clicks into place. In this Video we show you how to empty and clean the condenser box. The condenser or heat exchanger of your dryer requires special care and should be cleaned every month. An uncleaned heat exchanger extends the drying time and can affect the drying result. Important: This manual is only valid for dryer which have a not selfcleaning condenser. In case of a Dryer with a heatpump we do not recommend to do a cleaning on your own. Let the dryer cool down and put an absorbent cloth under the service door before putting out the condenser.Flush the heat exchanger of all sides with a water jet to completely remove all lint.Attention! Heat exchanger can be damaged. Clean the heat exchanger only with water and do not use hard or sharp-edged objects to remove the fluff.Remove all lint from the seals on the dryer and heat exchanger.Let the water drip off completely.insert the heat exchanger first and then the heat exchanger attachmentTurn both locking levers back and close the maintenance flap until the lock engages. Our Bosch experts in the video show you how to clean you condenser. See more The dryer is equipped with a Humidity sensor made of stainless steel. The moisture sensor measuresthe degree of moisture of the laundry. After a long period of use, it can spread to the humidity sensor a fine layer of lime or residues of deposit detergents and care products. These deposits must be cleaned regularly otherwise the function of the dryers sensor and the drying results can be impacted. It is quite simple to do: just open the door and clean the humidity sensor with a roughened sponge. Taking care and keeping your dryer in good condition saves energy, costs and prolongs the lifespan of your appliance. Last but not least: If you need to clean the housing, the best method is with a soft cloth and a little bit of soapy solution. There is no need to buy a special cleaning product for dryers. Also, don't forget to remove any dust that builds up on the back of the appliance. If you still have any unanswered questions about cleaning your dryer, feel free to contact our customer service team. If you're having a problem with your home appliance, there's no easier way to get it up and running again than our expert home repair service. The Bosch Service Assistant gives you complete access to the many service and information offers available for your home appliance. Our experienced home appliance experts are ready with answers to your questions on our service hotline. Get in touch Contact our outstanding service - before and after the purchase. Bosch Home Appliance Service Outstanding service - before and after the purchase. Local topic Maecenas porttitor congue massa. Fusce posuere, magna sed pulvinar ultricies, purus lectus malesuada libero... Cleaning the condenser is part of a dryer's regular maintenance process and it's important to help keep it running efficiently.If the condenser (also known as a heat exchanger) in your Bosch dryer is due for a clean, follow these steps:1. First, ensure the dryer is cool.2. Place a towel under or near the maintenance flap to absorb any water that may drip. The maintenance flap is located at the bottom of your dryer.3. Unlock the maintenance flap and open it. You'll see the condenser cap inside (also known as the heat exchanger cap).4. Turn the levers to unlock the cap and pull it out. You'll see the condenser behind it.5. Pull out the condenser carefully. Do not use sharp instruments to help pull the condenser out. 6. Wash the cap and condenser under running water carefully to remove lint. Allow both to completely dry.7. Insert the condenser into the dryer, then insert the cap. Lock the levers.8. Close the maintenance flap.Need further assistance on dryer maintenance?Review your owner's manual for more details. Content Menu How To Clean Bosch Heat Pump Dryer ● Introduction ● Understanding Your Bosch Heat Pump Dryer ● Why Cleaning is Important ● Step-by-Step Cleaning Process >> Step 1: Gather Your Supplies >> Step 2: Unplug the Dryer >> Step 3: Clean the Lint Filter >> Step 4: Clean the Heat Exchanger >> Step 5: Wipe Down the Interior >> Step 6: Clean the Exterior >> Step 7: Reassemble and Test ● Maintenance Tips ● Conclusion ● Frequently Asked Questions >> 1. How often should I clean my Bosch heat pump dryer? >> 2. What tools do I need to clean my dryer? >> 3. Can I use any cleaning products on my dryer? >> 4. What should I do if my dryer is not drying clothes properly? >> 5. Is it safe to clean the heat exchanger myself? Introduction Cleaning your Bosch heat pump dryer is essential for maintaining its efficiency and prolonging its lifespan. Regular maintenance not only ensures that your clothes dry effectively but also helps prevent potential issues that could arise from lint buildup and other debris. In this guide, we will walk you through the steps to clean your Bosch heat pump dryer thoroughly. Understanding Your Bosch Heat Pump Dryer Before diving into the cleaning process, it's important to understand how your Bosch heat pump dryer works. Unlike traditional dryers, heat pump dryers use a closed-loop system to recycle air, which makes them more energy-efficient. However, this system can accumulate lint and debris, which can hinder performance if not cleaned regularly. Why Cleaning is Important Regular cleaning of your Bosch heat pump dryer is crucial for several reasons: 1. Efficiency: A clean dryer operates more efficiently, reducing energy consumption. 2. Longevity: Regular maintenance can extend the life of your appliance. 3. Safety: Lint buildup can pose a fire hazard, making cleaning a safety priority. Step-by-Step Cleaning Process Step 1: Gather Your Supplies Before you start cleaning, gather the following supplies: 1. Soft brush or vacuum cleaner 2. Microfiber cloths 3. Mild detergent 4. Towel Step 2: Unplug the Dryer For safety, always unplug your dryer before starting any cleaning process. This prevents any accidental starts while you are working. Step 3: Clean the Lint Filter 1. Remove the Lint Filter: Open the dryer door and pull out the lint filter. 2. Clean the Filter: Use your hand or a soft brush to remove lint buildup. Rinse it under warm water if necessary, and let it dry completely before reinserting it. Step 4: Clean the Heat Exchanger 1. Locate the Heat Exchanger: This is usually found at the bottom of the dryer. 2. Remove the Heat Exchanger: Follow the manufacturer's instructions to safely remove it. 3. Clean the Heat Exchanger: Use a vacuum cleaner with a brush attachment to remove lint. If it's heavily soiled, rinse it under running water and let it dry completely. Step 5: Wipe Down the Interior 1. Use a Microfiber Cloth: Wipe down the interior of the dryer drum with a damp microfiber cloth to remove any dust or residue. 2. Check for Debris: Inspect the drum for any remaining debris and clean as necessary. Step 6: Clean the Exterior 1. Locate the Heat Exchanger: This is usually found at the bottom of the dryer. 2. Remove the Heat Exchanger: Follow the manufacturer's instructions to safely remove it. 3. Clean the Heat Exchanger: Use a vacuum cleaner with a brush attachment to remove lint. If it's heavily soiled, rinse it under running water and let it dry completely. Step 7: Reassemble and Test 1. Reinsert the Heat Exchanger: Once it's completely dry, reinsert the heat exchanger. 2. Plug in the Dryer: Reconnect the power and run a short cycle to ensure everything is functioning properly. Maintenance Tips 1. Regular Cleaning: Clean the lint filter after every use and the heat exchanger every few months. 2. Check for Blockages: Regularly inspect the venting system for blockages to ensure proper airflow. 3. Professional Servicing: Consider having your dryer serviced by a professional annually for a thorough cleaning and inspection. Conclusion Cleaning your Bosch heat pump dryer is a straightforward process that can significantly enhance its performance and safety. By following these steps and maintaining a regular cleaning schedule, you can ensure that your dryer remains efficient and effective for years to come. Frequently Asked Questions 1. How often should I clean my Bosch heat pump dryer? It is recommended to clean the lint filter after every use and the heat exchanger every few months. 2. What tools do I need to clean my dryer? You will need a soft brush or vacuum cleaner, microfiber cloths, mild detergent, and a towel. 3. Can I use any cleaning products on my dryer? It is best to use mild detergents and avoid harsh chemicals that could damage the dryer. 4. What should I do if my dryer is not drying clothes properly? Check for lint buildup in the filter and heat exchanger, and ensure that the venting system is clear. 5. Is it safe to clean the heat exchanger myself? Yes, as long as you follow the manufacturer's instructions and ensure the dryer is unplugged during cleaning. Cleaning your dryer and providing regular maintenance is important to help keep it running efficiently.Lint-clogged dryers take longer to dry clothes which means you will spend more electricity.Cleaning your dryer on a regular basis could help you save money. How to clean your dryer's exteriorTo clean your dryer's exterior, simply wipe it down with a damp cloth.How to clean your dryer's interiorTo clean the lint filter, pull out the filter and remove the lint. Wash the filter gently under running water to remove any additional lint and allow it to completely dry. Reinsert the filter into the dryer.For instructions on how to clean the condenser, visit this page.To clean the moisture sensor, wipe it down with a damp cloth and a little bit of white vinegar. The sensor is located next to the lint filter.Need further assistance on the dryer maintenance process?Make sure to check our resources: Is your Bosch heat pump dryer not performing as well as it used to? If you've noticed a decrease in drying efficiency, longer drying times, or strange noises, it might be time for a thorough cleaning. Regular maintenance is crucial for ensuring optimal performance and extending the lifespan of your appliance. This comprehensive guide will walk you through the step-by-step process of cleaning your Bosch heat pump dryer, leaving it refreshed and running like new.Tools and Materials You'll NeedBefore you begin, gather the following tools and materials:Soft cloths or spongesVacuum cleaner with a brush attachmentDrywall brush or paintbrushAll-purpose cleanerWhite vinegarScrewdriver (optional)Step 1: Unplug and DisconnectSafety first! Always unplug your dryer from the power outlet before starting any maintenance or cleaning.Step 2: Remove the Lint Filter and CleanThe lint filter is the most important part of your dryer to clean regularly. Remove the lint filter and use your vacuum cleaner with a brush attachment to remove any lint or debris. You can also rinse the filter with warm water to remove any stubborn particles.The lint vent is a crucial passageway for air to circulate, so it's essential to keep it clear of lint buildup. Use your vacuum cleaner with a brush attachment to remove any lint from the vent. If necessary, you can use a drywall brush or paintbrush to gently dislodge any stubborn lint.Step 4: Clean the CondenserThe condenser is responsible for removing moisture from the air. Over time, lint and dust can accumulate on the condenser, which can reduce its efficiency. To clean the condenser, remove the screws holding it in place and use your vacuum cleaner with a brush attachment to remove any lint or debris.The evaporator coils are located behind the front panel of your dryer. To access them, remove the screws holding the panel in place. Use your vacuum cleaner with a brush attachment to gently remove any lint or dust from the coils.Step 6: Clean the Drum and Door SealUse a soft cloth or sponge dampened with an all-purpose cleaner to wipe down the inside of the dryer drum and the door seal. This will remove any dirt or debris that may have accumulated.Step 7: Run a Vinegar Rinse CycleTo remove any lingering odors or buildup, run a rinse cycle with 1 cup of white vinegar. Simply pour the vinegar into the fabric softener dispenser and run the dryer on a short cycle with no heat.In addition to regular cleaning, there are a few additional tips you can follow to ensure your Bosch heat pump dryer performs optimally:Use the right drying cycle for your clothes.Q: What are the signs that my dryer needs cleaning? A: Decreased drying efficiency, longer drying times, strange noises, and odors are all signs that your dryer may need cleaning.Q: Can I use bleach to clean my dryer? A: No, do not use bleach to clean your dryer. Bleach can damage the finish of your dryer and its components. If you're a proud owner of a Bosch heat pump dryer, you know that it's a game-changer in laundry care. But to keep your dryer operating efficiently and extending its lifespan, regular cleaning is essential. This comprehensive guide will walk you through every step of cleaning your Bosch heat pump dryer, empowering you to maintain its pristine condition and enjoy years of reliable performance. Why Clean Your Bosch Heat Pump Dryer? Regular cleaning of your Bosch heat pump dryer offers numerous benefits: Improved Drying Performance: A clean dryer ensures efficient airflow, allowing clothes to dry evenly and quickly. Reduced Energy Consumption: A clogged dryer works harder to achieve the same results, leading to higher energy bills. Extended Dryer Lifespan: Proper cleaning prevents lint buildup and other debris from damaging vital components, prolonging the dryer's lifespan. Fresh and Odorless Laundry: A clean dryer eliminates unpleasant odors, leaving your clothes smelling fresh and clean. Essential Cleaning Tools Before you embark on the cleaning process, gather the necessary tools: Soft cloths or microfiber towels Vacuum cleaner with a crevice attachment Mild dish soap Lint brush or old toothbrush Step-by-Step Cleaning Instructions 1. Unplug the Dryer and Disconnect the Exhaust Hose Safety first! Unplug the dryer from the power outlet and disconnect the exhaust hose from the back. 2. Remove the Lint Filter and Clean It The lint filter is the most critical component to clean regularly. Remove it from the dryer door and use a vacuum cleaner to remove all lint. You can also wash the filter with warm, soapy water and dry it thoroughly before reinserting it. 3. Clean the Lint Trap Locate the lint trap behind the lint filter. Use your vacuum cleaner's crevice attachment to remove any lint or debris. Wipe the lint trap with a damp cloth and dry it completely. 4. Clean the Condenser The condenser is responsible for capturing moisture from the air. Over time, it can accumulate lint and dust. Remove the condenser from the dryer (refer to your user manual for specific instructions) and clean it thoroughly using a vacuum cleaner and a soft brush. 5. Clean the Drum Use a soft cloth dampened with mild dish soap to wipe down the inside of the dryer drum. Avoid using abrasive cleaners or steel wool, as these can damage the drum's surface. 6. Clean the Exhaust Vent Lint can accumulate in the exhaust vent, obstructing airflow. Disconnect the exhaust hose from the outside vent and use a vacuum cleaner to remove any debris. If the vent is particularly clogged, you may need to use a vent cleaning brush. 7. Reassemble and Test Once all components are cleaned, reassemble the dryer and reconnect the exhaust hose. Plug the dryer back into the power outlet and run an empty cycle to ensure it's functioning properly. Additional Cleaning Tips Monthly Cleaning: For optimal performance, clean the lint filter and lint trap monthly. Quarterly Cleaning: Schedule a quarterly cleaning to deep clean the condenser, drum, and exhaust vent. Use Dryer Sheets: Dryer sheets help reduce static and prevent lint buildup. Avoid Overloading the Dryer: Overloading can restrict airflow and hinder drying efficiency. Check the Exhaust Vent Regularly: Inspect the exhaust vent periodically for any blockages or damage. Wrapping Up: A Clean Dryer for Years of Trouble-Free Laundry Care By following these simple steps, you can effectively clean your Bosch heat pump dryer and ensure its optimal performance for years to come. Regular cleaning not only extends the dryer's lifespan but also reduces energy consumption, improves drying efficiency, and keeps your laundry smelling fresh and clean. Embrace the benefits of a well-maintained dryer and enjoy the convenience of effortless laundry care. What You Need to Know Q: How often should I clean my Bosch heat pump dryer? A: For optimal performance, clean the lint filter and lint trap monthly. Schedule a quarterly cleaning to deep clean the condenser, drum, and exhaust vent. Q: What should I use to clean the inside of the dryer drum? A: Use a soft cloth dampened with mild dish soap to wipe down the inside of the dryer drum. Avoid using abrasive cleaners or steel wool. Q: How can I prevent lint buildup in the exhaust vent? A: Use dryer sheets regularly and avoid overloading the dryer. Check the exhaust vent periodically for any blockages or damage. Thanks for your feedback!