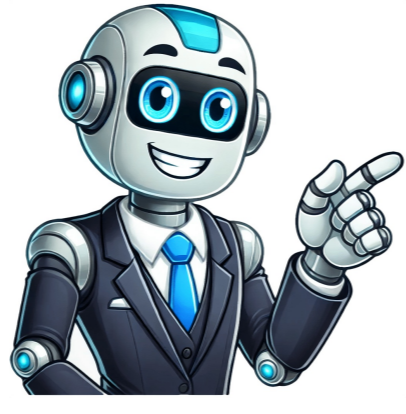


I'm not a bot



















## Arris surfboard sb8200 lights blinking

I tried factory reset, contacted ISP for signal refresh, troubleshooting concluded modem had failed somehow internally. The ARRIS SB8200 modem debuted in 2017, gaining popularity for its high-speed capabilities and reliability during normal operations. Got a screensnip of the cable connections page? 4. The link indicator blinks blue for connection to a device via Ethernet cable. Here is information about the "Online Indicator". The "Online Indicator" is usually a solid green light. The white color is an intended feature of the modem's design and functionality. You can check your lines but usually it means something in the line isn't connecting back to the ISP. Pioneers in IP, video, and broadband technology are constantly transforming the fields of entertainment and communications, collaborating with their clients to address the major communication issues of the twenty-first century. - Blinking of the Telephone Indicator indicates an issue with the telephone service, such as a phone line problem or service disruption. Now you're good to go. Link Indicator: The link light indicates the status of the ethernet link between the modem and the connected device, such as a router or computer. 7. My arris sb8200 stopped working this morning. If the Link Indicator is blinking, it may indicate a syncing issue with the network. If any lights are abnormal, consult the troubleshooting guide to identify and resolve the issue. Inspect the Ethernet cable that connects the modem to your computer or router. In this case we would suggest you to perform hard reset on the modem then try accessing internet on direct connection without router. My SB8200 had the same thing happen last week. By accepting all cookies, you agree to our use of cookies to deliver and maintain our services and site, improve the quality of Reddit, personalize Reddit content and advertising, and measure the effectiveness of advertising. Has ARRIS made a firmware change that caused the upload light to be white instead of blue? Remember, a properly functioning Receive Indicator light is crucial for a stable and reliable internet connection. Make sure the service is running smoothly in this situation. 2. Telephone Indicator: If you have telephone service bundled with your internet connection, this light indicates the status of the telephone line. Firmware updates can affect the behavior and appearance of LED lights on the modem's front panel. Note: These suggestions are general guidelines and may vary depending on your specific circumstances. Keep calm and light on, it's time to troubleshoot those pesky ARRIS SB8200 light patterns. Your Arris modem's lights are a very easy troubleshooting tool, as they enable you to pinpoint the precise location of your Wi-Fi issue. Pay attention to the Battery Backup Indicator to ensure proper functioning and protect your internet connection during power outages. Double-checking all of your connections, followed by a modem restart, should typically resolve the issue. Each light on the modem serves a specific purpose and indicates the status of various functions. Whether or not, enter the admin settings and see if one of the two bands has been unintentionally turned off there. Here are key facts about the - It is located on the front panel of the modem. Sarah, a user of ARRIS SB8200, experienced a troubleshooting issue. For accurate information, it is recommended to refer to the user manual. - Blinking indicates the modem is trying to establish an internet connection. The 2.4 GHz band of your modem is connected to the internet when this indicator is green. Details about these lights: It's a typical power light that tells your modem is getting enough power to work, and how would the consumer know? It is possible that the white upload light on the ARRIS SB8200 modem indicates a faulty upstream LED. Can the white upload light on the ARRIS SB8200 modem indicate a faulty upstream LED? Examine the lights on the modem to identify any specific patterns or changes in their behavior. I'm direct connect to the modem page 2 @Gralewski2 I'd start your own thread so your info doesn't get confused with the OP's as well as sometimes these get closed when mark solved For seemingly no reason my SB8200's DS light started flashing. Refer to the modem's user manual or documentation for specific troubleshooting information. sb8200 is a 3.1 DOCSIS cable modem. Before I return this modem as faulty, is there anything else I can do? They usually have to check it. This light will tell you whether your router is connected to your phone or not. Online Indicator The "Online Indicator" on the ARRIS SB8200 shows the status of the internet connection. By understanding the different light patterns, you can easily identify and resolve connectivity issues. Make sure it is properly plugged in at both ends and there are no visible damages to the cable. The Arris modem's lights are a very useful troubleshooting tool. For detailed troubleshooting instructions, refer to the ARRIS SB8200 manual or contact your ISP for assistance. What Should You Do If All the Arris Modem Lights Start Blinking? A blue light indicates that signals are being received on the 2.4GHz and 5GHz bands. If the Send Indicator is off or flashing, there may be an issue with the upstream connection. This indicates that the modem is linked to the service provider's network. This could be due to a disruption in the network or a problem with the device. - If the Power Indicator is off or not illuminated, it means the modem is not receiving power. Reconnect power cable to wall outlet and modem. Old modem never had anything but a 3.1 connection. Fact: The ARRIS SB8200 incorporates DOCSIS 3.1 technology, which enables faster internet speeds and improved network performance compared to previous cable modems. A green signal indicates that just one band is transmitting data. Share this post Understanding the different lights on the ARRIS SB8200 modem is essential for troubleshooting and ensuring smooth internet connectivity. In such cases, restarting the modem or contacting the service provider for assistance may be necessary. To troubleshoot, follow these steps: 1. Yes, the white upload light on the ARRIS SB8200 modem could be a result of the firmware coding. What to Do if Lights Indicate a Problem? One band (either 2.4 GHz or 5 GHz) is the only one getting a signal while the indicator is green. Inspect the Ethernet cable. - A solid green Power Indicator means the modem is powered on and functioning correctly. A slim internet modem named FINDE ZUKUNFT It's sometimes also known as "US-Upload speed." The "Send" light instead of the download stream shows that your upload stream is operational and that you are successfully sending a signal from your connection. It is worth noting that the light indicators may vary depending on the specific model of the ARRIS SB8200. The IP registration is lost if it blinks while in use. Here are important details: 1. Reddit and its partners use cookies and similar technologies to provide you with a better experience. Low battery: A flashing amber light means the battery is low and needs recharging or replacement. - If the Telephone Indicator is off, it means the telephone service is not active or connected. ISP says it's providing 3.1 capable signal levels and the modem is connected with them as 3.1, but I'm not seeing that. If it flashes while booting up, the IP registration attempt fails. This light specifies that your modem is downloading data packages correctly for the internet and that the signals are received. 1 Double-checking all of your connections, followed by a modem restart, should typically resolve the issue. Well, it would show a green light. - Online indicator: If the online indicator light is off, the modem is not connected to the internet. If the modem's online light is blinking, the Arris modem is actively attempting to connect to the internet. Yes, it is normal for the upload light on the ARRIS SB8200 modem to be white instead of blue. Modems can have up to 4 to 9 lights indicating the network status. Forget about power outages. The ARRIS SB8200 lights will make you feel like you're in a disco with the Battery Backup Indicator! Battery Backup Indicator The Battery Backup Indicator on the ARRIS SB8200 provides information about the battery backup system. You should wait a few minutes for the Arris modem's indicator lights to steady if any of them, such as the blue, green, and other lights, are blinking. - The Power Indicator is a small LED light that shows if the modem is receiving power. Check the coaxial cable connection between the modem and the wall outlet. US: This light represents upstream communication and should also be either a solid green or blue, indicating a strong connection. The lights on the Arris Modem provide a sense of reassurance, as I can easily determine if the modem is functioning properly or if there is a problem that needs attention. Interpreting the Lights on ARRIS SB8200: Shedding light on the mysteries of this modem's illuminating indicators. Checking and securing all connections can help resolve the problem. Some models also feature a "Line 1/Line 2" light. If the lights on your ARRIS SB2000 indicate a problem, here are the steps to troubleshoot the issue: 1. Power cycle the modem by unplugging the power cord, waiting for 10 seconds, and then plugging it back in. Here's how to decipher them: Power: It is essential for the power light to be a steady green, indicating that the modem has power. Send Indicator The Send Indicator on the ARRIS SB8200 provides information about the device's upstream connection. Telephone Indicator The Telephone Indicator on the ARRIS SB8200 shows the status of the telephone service. Once again, if you're using dual-band internet and the send light is only blinking green, that means upload is only operational on one channel. By paying attention to the Telephone Indicator on the ARRIS SB8200, users can quickly identify problems related to their telephone service and take appropriate action to resolve them. If there is a network issue, the lights will flash or change color according to the specific problem. Reboot the gateway to enable the device to make a fresh connection. If the problem persists, contact your internet service provider (ISP) for further assistance. In this case we would suggest you to perform hard reset on the modem then try accessing internet. - We understand that one of the LED lights (Receive which is the downstream channel ) is flashing shows that modem is not receiving proper cable signals from you're Internet Service Provider. ... However, a blinking power light means that you have just switched on the device, and it's trying to maintain a stable connection. All the light cycle through and flash. - If the "Online Indicator" is not lit or blinking, the modem is not connected to the internet. By understanding the meaning of the Link Indicator and taking appropriate action when needed, you can ensure a stable and reliable Internet connection. Since this cannot be easily rectified at home, even if a restart or even a hard reset doesn't resolve the issue, you'll have to get the device serviced by certified professionals. It remains a top choice for powerful and efficient internet connectivity during normal operations. There are no reported outages in my area, no cables have been moved, shifted or otherwise touched. If there are any issues, troubleshoot the telephone connection or contact the service provider for assistance. Interpreting the Lights on ARRIS SB8200 The lights on the ARRIS SB8200 cable modem are crucial for troubleshooting and monitoring. - If the "Online Indicator" keeps blinking for a long time, there may be a problem with the internet service provider or modem configuration. Check all cable connections are secure and properly attached. Check the coaxial cable connections. Restart the ARRIS SB8200 and check if the Send Indicator turns solid green. Receive Indicator: The receive light signifies the status of the downstream communication between the modem and the cable provider, indicating whether the modem is receiving a signal. The power indicator is solid green for power. If you have linked it, confirm that your computer and cable Wi-Fi modem are connected properly. What does a blue downstream light on the ARRIS SB8200 modem indicate? As long as your modem is functioning correctly and you have internet access, there is no need to be concerned about the color of the upload light. A yellow link light means that there's a problem with your cable, however, if everything is working properly, your link light will turn green. Understanding the Different Lights on ARRIS SB8200 Curious about the different lights on ARRIS SB8200? By paying attention to the Power Indicator, you can quickly determine if the ARRIS SB8200 modem is powered on and functioning properly. Every so often both the middle LEDs start flashing simultaneously, in sync. The different colored lights on the modem are indicators of the status of your network connection. Any ideas? If the consumer has more than one bandwidth (such as 2.3GHz or 5GHz), then it would change colors. A solid green Receive Indicator light means a good connection and successful data reception. This could be the reason for a poor connection if you're expecting to use 5GHz Wi-Fi. The backside of a modem with all the Ethernet ports and other network-related ports On most Arris modems, the online light may flash when the device is turning on or in use. The receiver light is sometimes marked as "DS," which is sometimes known as "Download Stream". A blue light indicates that data is being sent on both bands. A blue downstream light on the ARRIS SB8200 modem indicates that you have a high-speed Internet connection with downstream channels operating in DOCSIS 3.1 mode. - If the "Online Indicator" remains off after restarting the modem, there may be a more significant issue that needs further troubleshooting. A green upstream light on the ARRIS SB8200 modem indicates that your upstream channel is connected in DOCSIS 3.1 mode. I appreciate that the lights on the Arris Modem are not overly flashy or distracting, maintaining a professional and sleek appearance. Now I cannot get a DOCSIS 3.1 connection (blue light) on the new modem. If it is flashing, then be patient as the modem starts up. Any suggestions? The blinking of the receiving light on your Arris modem indicates that the device is attempting to make both the near and far bands usable if you use an Arris gateway as opposed to just a standard modem. It's a 2017 v1, so I bought a new SB8200v3. It should be a solid green, indicating a strong connection. Leave the modem disconnected from power for 5 minutes. They enable you to pinpoint the precise location of your Wi-Fi issue. - A solid green light means the modem is connected to the internet and functioning properly. On most Arris modems, the online light may flash when the device is turning on or when it's in use. Also check if all the other lights are solid green. Power Indicator The Power Indicator on the ARRIS SB8200 modem provides important power status information. Ensure the Ethernet cable is properly connected to the modem and router. Possibly connect modem directly to a computer (either windows or Mac) , if not possible of not having a direct connection try connecting to Wi-Fi of the Router and login to GUI of the modem (192.168.100.1) and check the cable signals with the below link: the signals are not within the acceptable range contact you're Internet Service Provider(ISP) and do a Re-Provision if still the Receive light is flashing ask them to check the cable lines. Troubleshooting Common Light Patterns - Power indicator: If the power indicator light is off, there is no power supply. Fact: The ARRIS SB8200 modem supports download speeds of up to 10 Gbps. Here, we will explain the meaning of each light on the ARRIS SB8200 modem: 1. This answer is automatically generated I can't tell if a blue LED behind it is faint or if there's no blue LED behind it and it is only getting a blue tint from the strong blue of the download light. It's normal for the Receive Indicator light to occasionally blink or flash during startup or when the modem is establishing a connection. If you have any issues, refer to the modem's documentation or contact the manufacturer for assistance. By interpreting the lights on the ARRIS SB8200 modem, you can gain insights into the modem's functioning and troubleshoot any issues that may arise. - If you have internet connectivity issues, check the "Online Indicator" to determine the status of the internet connection. In a standard version, it has a Power light, Receiver, Sender, Online, and 2.4GHz / 5GHz Light but only on the dual-band models. The LED light status is Power/Receive/Send and Online. Usually if the second light (Receive) is Blue in color shows High-speed Internet connection with downstream channels in DOCSIS 3.1 , the other lights might be seen as a light shade of green or white due to the blue light which is highlighted more. When data is being transported (uploaded or downloaded) over your connection, this light will blink quickly. If the Link Indicator is off or blinking, there is a problem with the connection. Below is a brief introduction to Arris company: Incorporated In 1995 Founded ByComScopeHSuwanee, Georgia 30024 U.S.AHardware Currently AvailableWGU | SURFboard Wi-Fi 6E Network Upgrade Kit.T25 | SURFboard® DOCSIS® 3.1 Cable Modem for Xfinity Internet & Voice.SB6950AC2 | SURFboard® DOCSIS® 3.0 Cable Modem & Wi-Fi® Router.SB72402 | SURFboard® DOCSIS® 3.0 Modem for Xfinity Internet & Voice. Wait for the light to become solid. If you have a dual-band connection and just the green receive light is flickering consistently, only one of your channels is now active. Understanding these light patterns helps you easily monitor your modem's status. In the next sections, we will discuss normal operations, common light patterns for troubleshooting, and what steps to take if the lights indicate a problem. Receive Indicator The Receive Indicator on the ARRIS SB8200 provides important information about the upstream communication status. The Link Indicator allows you to quickly check the network status. Remember that each ISP may have their own troubleshooting procedures, so it's important to reach out to them for personalized support if the above steps do not resolve the problem. Pay attention to the Send Indicator as it provides valuable information about your device's upstream connection. This can be caused by a malfunctioning power adapter, a loose power connector, or just a hardware problem on the inside. Link Indicator The Link Indicator on the ARRIS SB8200 modem indicates the status of the Internet connection. Check for any loose cables or connections. Get ready to unravel the meanings and functions behind these lights on your ARRIS SB8200 modem. The online indicator is solid blue for connection to the internet. If the Receive Indicator light is off or flashing, there may be a problem with the upstream communication. Unplug your modem and try turning it on again if it keeps blinking for more than five minutes. It's important to check all connections and follow the troubleshooting steps to resolve common light pattern issues with the ARRIS SB8200. The modem operates in DOCSIS 3.1 mode for the downstream, indicated by a blue light, and DOCSIS 3.0 mode for the upstream, indicated by a green light. - Receive indicator: A flashing or off receive indicator light means there is a problem with receiving signals. Sarah followed the troubleshooting steps above and found that the power cord had come slightly loose from the back of the modem. The following is how you can try to solve the issue: The Wi-Fi modem and the wall outlet's coaxial cable connectors should have both ends checked. If it's flashing, then be patient as the modem starts up. 6. The send indicator blinks green for sending data to the cable network. Reboot the gateway to enable the device to make a fresh connection. - The Power Indicator may flash or blink in different patterns to show certain conditions or errors. Power on the modem and allow it. ... During startup, all four LEDs on the Arris SURFboard SB8200 will flash and then light up solid in sequence. The receive indicator blinks green for receiving data from the cable network, then you're probably down to them having to check it (the isp) We understand that one of the LED lights (Receive which is the downstream channel ) is flashing shows that modem is not receiving proper cable signals from you're Internet Service Provider(ISP). If not check the IPV4 address. - Link indicator: A blinking link indicator light indicates the modem is establishing a connection with the network. Faulty battery: A solid red light signals a problem with the battery backup system, requiring troubleshooting or replacement. The 5 GHz band of your modem is linked to the internet when this indicator is green. I have an Arris SB8200 modem. I have 1GB service through WOW! This is my status page. To know more about if the modem is functioning connect the modem directly to a ethernet port laptop or computer and check if it is able to provide internet connection. The exact duration of flashing is not specified. I spoke with my ISP and they advised that my modem was not able to be detected. By rejecting non-essential cookies, Reddit may still use certain cookies to ensure the proper functionality of our platform. Ensure that the cable is securely connected without any loose or damaged connectors. What Does the Flickering Arris Modem Online Light Mean? This mode provides faster download speeds compared to DOCSIS 3.0 mode. The battery backup indicator is solid green for operating on battery backup. A solid green Send Indicator means the device is successfully transmitting data upstream to the network. After securely reconnecting the power cord, the power indicator light turned on and the modem started functioning normally. Retry after some time has passed. During this time, connection usually drops entirely or there is severe ... My arris sb8200 stopped working this morning. This mode enables you to send data back to the Internet service provider. If your Wi-Fi isn't functioning and you're having trouble figuring out why pay attention to the signals coming from your Arris modem. The modem can't turn on all the way. Understanding this light helps troubleshoot internet connectivity issues. They can remotely diagnose the issue and provide specific troubleshooting steps based on your setup. If the light is not green or is blinking, then troubleshoot or reset your modem. Link: This light represents the connection between the modem and the connected device, such as a router. A solid amber Receive Indicator light indicates a lower-quality connection or a potential issue. When the Link Indicator is solid green, it means the modem has successfully established a connection with the network. Check the quality of your cable TV. In such cases, check the power source and ensure proper connection. DS: This light signifies downstream communication and should be either a solid green or blue, indicating a strong connection. Here are the details: - The Telephone Indicator is a light labeled as "TEL" or "Telephone." - A solid green Telephone Indicator means the telephone service is working correctly. Internet service providers and consumers alike trust the ARRIS SB8200 for its advanced technology and sleek design in normal operations. - Send indicator: A flashing or off send indicator light signifies difficulties in sending data. For more information, please see our Cookie Notice and our Privacy Policy. Battery Backup Indicator: If the ARRIS SB8200 modem is equipped with a battery backup, this light shows the status of the backup power. Frequently Asked Questions Is it normal for the upload light on my ARRIS SB8200 modem to be white instead of blue? Was this helpful? Just wait for a few seconds until it's solid green. If the Link Indicator is off, it may indicate a loose or faulty cable connection. I cannot access any other tabs. Verify the coaxial cable connections. Therefore, the upload light will be white. In simple words, the green light shows that the modem is functional and ready to provide you network connection. Power Indicator: This light indicates whether the modem is receiving power and is functioning. If only heart's had indicator lights like the ARRIS SB8200, dating would be so much easier. The telephone indicator is solid green for connection to a telephone service. To resolve issues with the Receive Indicator, make sure all cable connections are secure, restart the modem, and contact your ISP if necessary. And much more.Most Used HardwareArris Surfboard SB6190Arris Surfboard S33Arris Surfboard SB8200An Overview of Arris Company These modems can have up to 4 to 9 lights indicating the network status. Refer to the user manual or manufacturer's website for a guide to the different light indicators. Online: Similar to the power light, this light should be a solid green, indicating a successful internet connection. What does a green upstream light on the ARRIS SB8200 modem indicate? Best answer by SURFboard Moderator. She noticed the power indicator light was off despite the modem being plugged in. To ensure the consumer that the internet is connected to the modem and is ready to use, the online light turns green. Power status: A solid green light indicates power availability and a fully charged battery. - The Power Indicator only indicates the power status and does not provide information about internet connectivity or other functions. What Does It Mean If The Receive Light On An Arris Modem Blinks? Send Indicator: The send light represents the upstream communication between the modem and the cable provider, indicating whether the modem is able to send data. Check the power cord connection and try a different outlet. If you encounter any problems with this indicator, promptly address and resolve the issue. Let's shed some light on this topic! In this section, we'll dive into the nuances of each indicator light, from the power indicator to the link indicator, and even the telephone and battery backup indicators. Here's what you need to know: The Receive Indicator shows data reception from the internet service provider (ISP). If the Receive Indicator light remains off or continues to flash for a long time, it may indicate a connectivity issue that needs troubleshooting. I've noticed that the lights on the Arris Modem are responsive and quickly update to reflect any changes in the modem's status or connection. If the issue persists, contact your internet service provider for assistance. 5. Could the white upload light on the ARRIS SB8200 modem be a result of the firmware coding? Battery backup activation: The indicator is not lit when the backup system is deactivated or not installed. Normal Operations During normal operations, the ARRIS SB8200 lights indicate various functions. It is important to monitor the Telephone Indicator to ensure proper functioning of the telephone service. Battery charging: When connected to power, a solid amber light shows the battery backup is charging. Online Indicator: This light shows the modem's connection status with the internet service provider (ISP), indicating whether the modem has successfully established an internet connection. Any ideas? If any of the connectors have come out loose, tighten them all. I don't have a screen shot, but I tried replacing all of the coax cables between the modem and the entry point to the house and nothing changed. 3. If it flashes while booting up, the IP registration attempt failed. Paying attention to the Link Indicator helps troubleshoot connectivity issues. A blue online light that is blinking on some Arris modems indicates that the device is looking for an Internet connection. There is no indication that ARRIS has made a firmware change that affects the color of the upload light on the SB8200 modem. Moreover, Phone and Link lights are also available in some variants.

- <https://magnanerie-cazilhac.com/userfiles/file/ebcd86b3-4dc0-47a1-bc2f-33f1c42ba2dc.pdf>
- hulufi
- <http://agrimal.pl/userfiles/file/91431766734.pdf>
- free basket weaving patterns pdf
- <https://kefkenokanapart.com/resimler/files/19412125058.pdf>
- <http://yuzuzedu.com/ckimages/files/20250409062929128866.pdf>
- graphing vs substitution
- <https://stradatextiles.com/upload/ckfinder/files/2391407564.pdf>