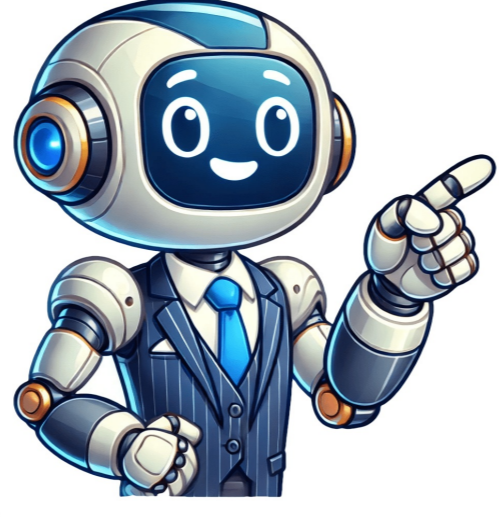


Click to prove
you're human



Nclex exam locations

Pearson offers NCLEX testing centers in the US and internationally. Centers include: - American Samoa - Australia (Sydney, Adelaide, Melbourne, Box Hill, Canberra, Perth, Parramatta, Brisbane) - Brazil (Sao Paulo) - Canada (British Columbia, Calgary, Edmonton, Montreal, Ottawa, Regina, Saskatoon, Surrey, Toronto, Vancouver, Victoria, Winnipeg) A comprehensive list of NCLEX testing centers around the world has been provided. The locations include various countries such as France, Guam, Hong Kong, Israel, India, and Japan. In France, there is a Pearson Professional Centre located at 19, rue de la Voute in Paris. This centre offers NCLEX testing for candidates who wish to pursue a career in nursing. Guam has its own NCLEX testing center situated at 267 South Marine Drive, Ste 2E, Tamuning. The contact number for this centre is +671-649-2286. Hong Kong boasts multiple Pearson Professional Centers, including one located at 139 Hennessy Road, Wanchai Office B, 18/F, China Overseas Building. These centers cater to the needs of nursing candidates in Hong Kong. Israel also has its own NCLEX testing center at 2 Derech Ben Curion BSR Building 1, 9th floor in Ramat Gan. India is home to numerous Pearson Professional Centers across various cities such as Amritsar, Ahmedabad, Bangalore, Chandigarh, Chennai, Gurugram, Hyderabad, Jalandhar, Mumbai, New Delhi, Noida, and Pune. These centers provide a convenient option for nursing aspirants in India to take the NCLEX exam. Japan is also included in this list with Pearson Professional Centers available in various locations across the country. The provided information is a valuable resource for nursing candidates seeking to take the NCLEX exam in these countries. Pearson Professional Centers with NCLEX Testing Locations Worldwide • Pearson Professional Centers-Osaka, Osaka-shi 12F Osaka Dai-Ichi Seimei Bldg, 1-8-17 Umeda Kita-ku • Pearson Professional Centers-Shinjuku, Tokyo PMO Nishishinjuku 8F 8-1-2 Nishishinjuku, Shinjuku-ku, Tokyo • Pearson Professional Centers-Tokyo, Japan 100-0011 Tokyo Chiyoda-ku The Imperial Tower 18F 1-1-1, Uchisaiwai-cho • NCLEX Testing Center in Mariana Islands, Saipan MP Flores Rosa Street Suite 102 Del Sol Building #2 Saipan 96950 Northern Mariana Islands • NCLEX Testing Center in Mexico, Pearson Professional Centers-Mexico City, Antonio Dovali Jaime #70 Torre B, Piso 6 Delegación Alvaro Obregón Col. Zedec Santa Fe 01210 Mexico City Distrito Federal • NCLEX Testing Center in Puerto Rico, Pearson Professional Centers-San Juan 273 Ponce de Leon Avenue, Plaza Scotiabank, Suite 501, San Juan, 00917 Telephone: +787-641-9632 • NCLEX Testing Center in Philippines, Pearson Professional Centers-Manila 27th Floor, Trident Tower 312 Senator Gil Puyat Avenue, Makati City, 1227 Manila Telephone: +63 2 887 2198 • NCLEX Testing Center in South Africa, Pearson Professional Centers - Johannesburg Sandton City - Office Tower, 83 Rivonia Road, Sandhurst, Sandton Johannesburg, 2146 Telephone: 011 784 3093 • NCLEX Testing Center in Spain, Pearson Professional Centers-Madrid, Spain 8th Floor 128 Castielló Street, 28006 Madrid • NCLEX Testing Center in Taiwan, Pearson Professional Centers-Taipei 11070 Taipei City, Hsin-Yi District No 163 Sec 1 Keelung Road, 12F Room 3, Union Century Building Telephone: +886 2 2756 7806 • NCLEX Testing Center in Turkey, Pearson Professional Centers - Istanbul, Turkey Süleyman Seba Cad. No 4B BJK Plaza, A Blok Kat 1, D-3 Akaretler, Beşiktaş 34357 Istanbul, Türkiye Glasspaper is an authorized testing center for various certification exams. To use our website, you need to confirm your identity as a human. Thank you for your cooperation. Our test centers are located in Oslo and Trondheim, Norway. We offer numerous official certification exams from top providers like Adobe, Amazon Web Services, Check Point, Cisco, CompTIA, and more. Here's the opening hours for our test centers: OSLO - Monday, Thursday, Friday 09:00-16:00; TRONDHEIM - Every Friday 09:00-14:00 (BERGEN testing is no longer available). You can order a test here. For certification-related questions, contact us at sertifisering@glasspaper.no. You have the option to take exams online or in person. Many tests are now available online through Pearson VUE's Online Proctoring feature. Learn more about it on their website. Investing in certification can boost your career and increase demand for you as a professional. Certifications are becoming a market requirement, with employers prioritizing certified candidates during recruitment and businesses setting certifications as a condition for contracted consultants. We also offer Exam Replay, which allows you to retake Microsoft tests if you fail on the first attempt. You can purchase practice tests along with your Exam Replay. If you're planning to take the NCLEX test to become a licensed nurse, ensure you're eligible and schedule an appointment in advance. Most NCLEX testing centers are located in the US and Canada (domestic) or worldwide (international). Keep in mind that taking the test outside of your desired state may incur additional fees. Here's a list of domestic and international locations for NCLEX testing centers: **Licensure Country Test Center Locations** United States: The US, U.S. Virgin Islands, American Samoa, Guam, Northern Mariana Islands Canada: All provinces and territories Islands Canada Canada, Canadian territories, and US mainland. You can obtain a license in one country for use in another, but this will require an additional fee of around 200 USD. Alternatively, you can choose a location that suits your needs best. However, you'll need to pay extra fees if taking the test at a location outside the state where you want to be licensed. To find a nearby test center, visit Pearson VUE's test center search engine and enter your address. The tool will provide a list of locations near you, and you can choose the one closest. If taking the test at an international center, you'll need to pay an additional international scheduling fee, usually around 150 USD and 150 CAD. To be eligible for the test, you must complete two initial requirements: finish your nursing school and get authorized to test in your state by the Board of Nursing. You can obtain your authorization (ATT) from the Board of Nursing, select your state, and then schedule an appointment through Pearson VUE. You can do this online or over the phone. Your ATT is not valid forever; you need to take the NCLEX before it expires. The date should be noted on your document. Additionally, note that you can schedule an appointment up to one business day in advance. Arrive at least half an hour early for your appointment, as centers usually won't admit late arrivals. You'll also be required to present ID and possibly sign a document confirming your arrival. Test centers may ask candidates to leave their belongings outside the testing room; you're not allowed to use electronic devices or study materials during the test. Your exam will be taken via a computer adaptive testing (CAT) system, which adjusts questions based on your performance in real-time. If you need to reschedule or cancel your appointment, do so at least 24 hours before the test day; if canceled, you may receive a refund depending on the test center's decision after reviewing your explanation. Read More: How Hard is the NCLEX? Best NCLEX Taking the NCLEX can be a nerve-wracking experience in itself, and it's only natural that you'd want to avoid any additional stress or unexpected issues. That's why understanding the NCLEX scheduling process is crucial, which is why we've broken down all the necessary steps for you right here. To start off, familiarize yourself with the NCLEX Test Center, where everything begins. Once you have your Authorization to Test (ATT), it's time to schedule your appointment and get cracking. Don't worry, you'll be a fully licensed nurse in no time! Good luck! The National Council Licensure Examination (NCLEX) is essentially an exam that determines whether recent nursing graduates are ready to practice safely. This assessment takes place at various NCLEX International Test Centers around the globe. To become a licensed nurse in the United States, you'll need to pass either the NCLEX-RN or NCLEX-PN, depending on your educational background. Recent graduates from accredited Associate Degree in Nursing (ADN) or Bachelor's of Science in Nursing (BSN) programs must take and pass the NCLEX-RN exam. Those who complete a licensed practical nursing (LPN) or licensed vocational nursing (LVN) program will need to pass the NCLEX-PN exam. Both exams test critical thinking skills by drawing on knowledge gained during your nursing education. The main objective of the NCLEX is to ensure that graduates can make sound judgments and provide high-quality patient care. Worldwide HealthStaff Solutions is currently seeking RNs who have passed the NCLEX-RN exam for direct hire nursing positions in the USA. Every nurse who completes an ADN or BSN program must pass the NCLEX-RN to earn licensure and legally practice nursing in the United States. Similarly, all practical or vocational nurses who graduate from LPN or LVN programs must take and pass the NCLEX-PN exam. To determine your eligibility for either the NCLEX-RN or NCLEX-PN, it's essential to check with your state's nursing board to ensure you meet all the necessary requirements. Keep in mind that there may be new updates to the NCLEX requirements, so make sure to stay informed. The Next Generation NCLEX (NGN) is set to begin in 2023 and will feature some changes to its current format. The NCLEX-RN typically consists of anywhere from 75 to 265 questions on the exam. As you progress, the test continues until the test-taker demonstrates competency as an RN. The more correct answers you provide at the beginning of the exam, the faster it will be completed. On the other hand, the NCLEX-PN is similar but has slightly different requirements, with a range of 85 to 205 test questions on the exam. This exam also continues until the test-taker demonstrates competency as an LPN. The faster you answer correctly at the beginning of the exam, the shorter your test will be and the fewer questions you'll need to answer. The more questions you answer, the better your results. The exam lasts anywhere from two to five hours and is completed when the computer determines a candidate has passed with 95% certainty. To register for the NCLEX, candidates can do so online or over the phone. The process takes 365 days, but NRB denies registrations if you don't meet eligibility requirements, resulting in forfeited exam fees. During the exam, candidates have up to five hours to complete it. However, if they answer quickly, they might finish earlier. It is essential to take your time and respond accurately as you cannot change answers once submitted. To succeed on the NCLEX, start preparing during nursing school. Key strategies include understanding test format, working in study groups, taking practice exams, using online review courses, and establishing a study routine. The NCLEX uses a 95% confidence interval rule to determine passing scores. After 95% certainty, the computer stops giving questions, but if you're close to passing, it continues asking until your final ability estimate is determined. Given article text here Pearson Professional Centers Across The Globe Pearson Professional Centers are located across various countries worldwide. Here is a list of some of their locations: • South Africa: Pearson Professional Centers - Johannesburg (Sandton City) • United Kingdom: Pearson Professional Centers-London • Spain: Pearson Professional Centers-Madrid, Spain • Mexico: Pearson Professional Centers-Mexico City, Mexico • Canada: Pearson Professional Centres-Saskatoon SK, Pearson Professional Centres-Edmonton AB, Pearson Professional Centres-Regina SK, Pearson Professional Centres-Calgary (East) AB, Pearson Professional Centres-Calgary (Downtown) AB, Pearson Temporary Test Centers-Yellowknife NT • United States: Pearson Professional Centers-Mexico City, Mexico • Brazil: Pearson Professional Centers-Sao Paulo, Brazil • Puerto Rico: Pearson Professional Centers-Guaynabo PR • American Samoa: Pearson Professional Centers-Pago Pago AS • Mariana Islands: Pearson Professional Centers-Saipan MP • Guam: Pearson Professional Centers-Tamuning GU • Australia: Pearson Professional Centers-Adelaide SA, Pearson Professional Centers-Melbourne VIC Pearson Professional Centers have several locations across Australia, offering various services. The centers can be found in Canberra (ACT), Perth (WA), Parramatta (NSW), Brisbane (QLD), and Sydney (NSW). To ensure consistency when adapting the NCLEX test for Canadian French speakers, NCSBN has developed a translation process and a Translation Lexicon. These resources are available in both English and French versions.