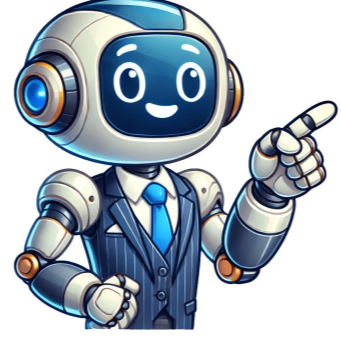


I'm not a robot



University of minnesota social work masters

Academics The UMD Department of Social Work offers Advanced Generalist and Generalist programs that will prepare you for a wide range of social work roles. Both programs are ideally suited for both urban and rural social work, and include a special focus on American Indian social services. Coursework in both the Generalist and Advanced Generalist program can be used to meet the educational requirements for becoming a clinical social worker in Minnesota and many other states. You can self-select from three areas of study based on your interests: Child welfare, Mental health/clinical social work, Macro/community-based social work practice. What is unique about UMD's MSW? We offer a hybrid model of course delivery, meaning most students are only on campus 1 day a week, and the majority of courses are taught by Full Time Faculty. We have a special commitment to American Indians with strong linkages to the American Indian community and specialized course content. UMD is also home to the Center for Regional and Tribal Child Welfare, which offers stipends, coursework and other cultural and experiential learning opportunities in the Child Welfare field. The program allows the flexibility to pursue your areas of interest by tailoring electives and field placements. Approximately 60% of our MSW students receive scholarships to help pay for their education. Graduates find work as therapists and case managers, community organizers and administrators. Specialized courses and field placements are available in areas such as clinical and child welfare practice, and American Indian social services. Content on developing cultural competence is integrated across the curriculum. We are a small, student-centered program with individualized faculty-student interaction. Our multi-racial/multi-gender faculty have expertise in serving culturally and socially diverse populations. Program Learning Outcomes In 2020/2021, 60% of our MSW students received funding through a scholarship or stipend while earning their MSW. Students interested in child welfare practice can apply to become a child welfare scholar. Students receive scholarship funds, a stipend, and support specialized to child welfare practice. Students interested in clinical social work practice can apply for the clinical scholars program. We currently have 10 clinical scholars and future funding will be contingent on federal funding availability. Students are also eligible to apply for the College of Education and Human Service professions specific scholarships, as well as scholarships available through the graduate school. To learn more, please visit the funding and scholarships page on our website. The University of Minnesota offers masters and doctoral degrees for more than 130 research-based graduate programs in the fields of science, art, engineering, agriculture, medicine, and humanities, as well as interdisciplinary programs. Our faculty are award-winning, internationally-renowned experts in their fields who will prepare you for long and fulfilling careers as researchers, innovators, and thought-leaders. The MSW prepares students for advanced social work practice. A 53-credit program and a 34-credit advanced standing program are available. The curriculum offers specializations in clinical mental health; community practice; families and children; and health, disabilities, and aging. © 2025 Regents of the University of Minnesota. All rights reserved. The University of Minnesota is an equal opportunity educator and employer. Privacy Statement College of Education and Human Service Professions College of Education and Human Development School of Social Work Masters of Social Work MSW/MPH Curriculum Information - Community Health Promotion MPH (PDF) Curriculum Information - Maternal and Child Health MPH (PDF) Community Engagement Component MSW/MPH students complete a 420-hour foundation practicum at an approved community agency during their first year of graduate study. MSW/MPH students complete a second 420-hour specialized practicum, which satisfies the MSW practicum requirement and the MPH applied practice requirement. Through these practicum opportunities, students apply knowledge from the classroom to work in the community, with an emphasis on health equity. Students learn how to apply classroom concepts to solving real-life problems from knowledgeable experts. Dual Degree Shared Credits MSW/MPH students can substitute the following MPH courses for required MSW course requirements. Please meet with your MSW advisor to make these changes in your GPAS before it is submitted. The MSW/MPH dual degree program allows you to 18 shared/transfer credits. Students enrolled in this program are allowed to use social work courses as electives to satisfy total credit requirements. Public Health Course Substitution Social Work Requirement PubH 6034: Evaluations I: Concepts (3cr) SW 8842 or SW 8843 (total of 3 credits) PubH 6050: Community Health Promotion I or PubH 6630: Foundations of MCH Leadership or PubH 6320: Fundamentals of Epidemiology (3cr) 2nd Anchor Course Requirement (3cr) Public Health classes 5 credits of elective credits* *Please note that any Public Health class being used to substitute elective credit requirements do not receive any clinical clock hours. Please check with the Social Work program for more information regarding your clinical clock hours. The Advanced Practicum requirement (SW 8020/8030 6cr) can be combined with the Applied Experience requirement (PubH 7096 1cr) so the placement counts for both practicum experiences (you will be required to register for the required amount of credits for both programs). Year 1 Public Health: Fall PubH 6050: Community Health Promotion I: Integrating Theory, Evidence, and Context PubH 6320: Fundamentals of Epidemiology Or PubH 6341: Epidemiologic Methods I PubH 6414: Biostatistical Literacy Or PubH 6450: Biostatistics I PubH 6078: Public Health as a Prevention Strategy Select one course from the Public Health Core list or Health Behavior, Policy and Interventions List Year 1 Public Health: Spring PubH 6051: Community Health Promotion II: Developing, Implementing, and Justifying Interventions PubH 6034: Evaluation I: Concepts PubH 6045: Skills for Policy Development PubH 6741: Ethics in Public Health: Professional Practice and Policy And/Or PubH 6751: Principles of Management in Health Services Organizations Select two or more courses from the Health Behavior, Policy and Interventions list Year 2 Public Health: Fall PubH 6035: Evaluation II: Applications PubH 7096: Applied Practice (Combined with SW Placement) Select one or more credits from the Health Behavior, Policy and Interventions Year 2 Public Health: Spring PubH 7094: Integrative Learning Experience Complete any remaining requirements from the Health Behavior, Policy and Interventions list Shared/Transfer Courses SW 8841 is a shared course that applies to Evaluation Methods requirements. SW 8551 is a shared course that applies to the Health Behavior, Policy and Interventions requirement Year 1 Public Health: Fall PubH 6630: Foundations of MCH Leadership PubH 6320: Fundamentals of Epidemiology Or PubH 6341: Epidemiologic Methods I PubH 6450: Biostatistics I Or PubH 6414: Biostatistics Literacy PubH 6250: Foundations of Public Health Year 1 Public Health: Spring PubH 6020: Fundamentals of Social and Behavioral PubH 6102: Issues in Environmental and Occupational Health PubH 6741: Ethics in Public Health: Professional Practice and Policy PubH 6751: Principles of Management in Health Services Organizations Meet with the Graduate Program Coordinator for program-specific course selection. Year 2 Public Health: Meet with Program Coordinator to plan remaining requirements Notes: SW 8806 and/or SW 8807 is shared as a Management, Communications, Advocacy and Policy requirement SW 8841 is a shared course that applies as a Research Methods and Analytics requirement College of Education and Human Development School of Social Work University of Minnesota - Twin Cities Request Information Get Info 124 Master's Degrees Awarded Social Work is a concentration offered under the social work major at University of Minnesota - Twin Cities. We've pulled together some essential information you should know about the master's degree program in social work, including how many students graduate each year, the ethnic diversity of these students, and more. If there's something special you're looking for, you can use one of the links below to find it. Graduate Cost Online Learning Student Diversity References How Much Does a Master's in Social Work from UMN Twin Cities Cost? \$19,221 Average Tuition and Fees UMN Twin Cities Graduate Tuition and Fees During the 2019-2020 academic year, part-time graduate students at UMN Twin Cities paid an average of \$2,267 per credit hour if they came to the school from out-of-state. In-state students paid a discounted rate of \$1,465 per credit hour. The following table shows the average full-time tuition and fees for graduate student. In State Out of State Tuitions 17,580 \$27,204 Fees \$1,641 \$1,641 Does UMN Twin Cities Offer an Online MSW in Social Work? Online degrees for the UMN Twin Cities social work master's degree program are not available at this time. To see if the school offers distance learning options in other areas, visit the UMN Twin Cities Online Learning page. UMN Twin Cities Master's Student Diversity for Social Work 124 Master's Degrees Awarded 83.9% Women 30.6% Racial-Ethnic Minorities* There were 124 master's degrees in social work awarded during the 2019-2020 academic year. Information about those students is shown below. Male-to-Female Ratio Of the students who received their master's degree in social work in 2019-2020, 83.9% of them were women. This is less than the nationwide number of 87.2%. Racial-Ethnic Diversity Racial-ethnic minority graduates* made up 30.6% of the social work master's degrees at UMN Twin Cities in 2019-2020. This is lower than the nationwide number of 42%. Race/Ethnicity Number of Students Asian 9 Black or African American 14 Hispanic or Latino 7 Native American or Alaska Native 0 Native Hawaiian or Pacific Islander 0 White 85 International Students 0 Other Races/Ethnicities 9 References* The racial-ethnic minorities count is calculated by taking the total number of students and subtracting white students, international students, and students whose race/ethnicity was unknown. This number is then divided by the total number of students at the school to obtain the racial-ethnic minority percentage. National Center for Education Statistics O*NET Online More about our data sources and methodologies. Popular Reports College Rankings Best by Location Degree Guides by Major Graduate Programs By Degree Level Popular Programs © 2023 All Rights Reserved. College Factual® is a registered trademark of Media Factual. This website uses resources that are being blocked by your network. Contact your network administrator for more information. University of Minnesota 612-625-5000 Go to the U of M home page Logout College of Education and Human Service Professions COLLEGE OF We empower future educators, researchers, and leaders to make a meaningful impact in the world. Our diverse range of programs is designed to meet you where you are on your educational journey, whether you're an aspiring teacher, an experienced professional seeking advancement, or a researcher looking to innovate. College of Education and Human Development School of Social Work The University of Minnesota, based in St. Paul, MN offers a fully funded Master of Social Work. The MSW program is the preparation of students for advanced social work practice and leadership in the following areas: clinical mental health; community practice; families and children; health, disability, and aging. The School of Social Work offers financial support for social work MSW and Ph.D. students through training grants, fellowships, scholarships, and graduate assistantships. Social work scholarships are awarded to students on the basis of need and merit and are made possible through donations to the School of Social Work. University of Minnesota Go to the U of M home page One Stop MyU : For Students, Faculty, and Staff