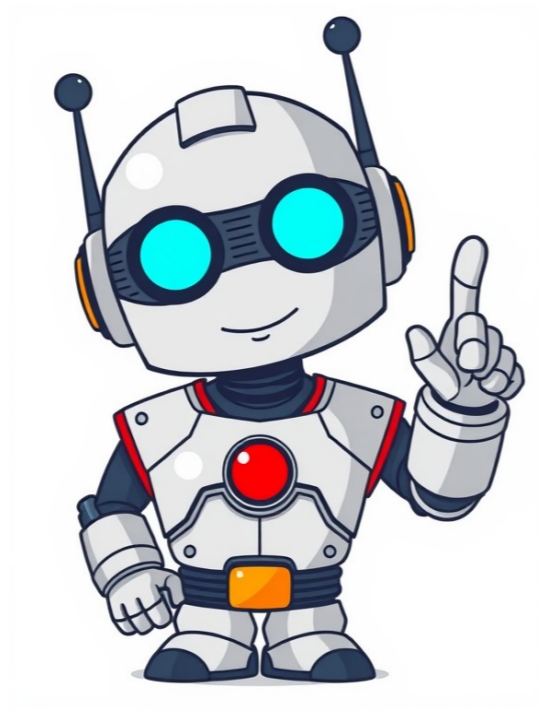


Continue



LSMW is a powerful tool in SAP that enables data migration from legacy systems into R/3 Systems. It offers an advantage over other tools like ecatt or scatt, as it can process large amounts of data in a single session. LSMW is also easier to learn and execute compared to other alternatives. The tool provides various functionalities, including creating master data, transactional data, modifying existing master data, and performing mass changes that are not possible through standard SAP transactions. One of the key benefits of LSMW is its ability to utilize standard objects such as material master, vendor master, customer master, purchasing info record, purchase requisitions, purchase orders, and others. These standard objects allow for mass data upload and mass transactions, making it easier to manage large amounts of data. Additionally, LSMW provides the functionality of recording transactions and then repeating them with a large amount of data. For creating simple projects, users can access the TCode LSMW, where all the steps are listed in detail, and the system prevents skipping any step. Users need to create a project, subproject, and object before proceeding. Input tools for LSMW include Microsoft Excel sheets and text tab-delimited files (e.g., notepad). An example of an LSMW project is presented in step-by-step manner. Users simply enter field names in the first line of the table, and the LSM Workbench's import routine automatically generates the input file for their conversion program. The tool allows users to check data migration against current settings of customizing, performing a check after data migration but before database update. Using the session method for data migration, such as for XD01 (create customer), there are initially 20 steps but reduces to 14 after processing one step. To complete the process, users enter TCode LSMW and follow these steps: 1. Maintain object attributes. 2. Maintain source structures. 3. Maintain source fields. 4. Maintain structure relations. 5. Maintain field mapping & conversion rule. 6. Maintain fixed values, transaction, user-defined. 7. Specify files. 8. Assign file. 9. Import data. 10. Display imported data. 11. Convert data. 12. Display converted data. 13. Create batch input session. 14. Run batch input session. LSMW, or Legacy System Migration Workbench, is a vital tool in SAP that facilitates the migration of legacy data into SAP systems. It's remarkably easy to grasp and master, making it an excellent choice for organizations looking to upgrade their legacy systems. One of LSMW's most significant advantages lies in its recording capabilities, which enable users to capture and upload transactions, including master data such as vendors, customers, general ledger accounts, asset records, and more. Maintaining Source Structure in LSMW: A Step-by-Step Guide The recording created is linked to the object VENDORS. Clicking on radio button 27 takes you to step 29, where you maintain source structures. Each time a transaction is performed, the radio button moves automatically to the next step and updates the Last action information. This process involves updating the fields captured in the recording. Step 1 recorded the file with the fields. Now, open that file in Excel and select all fields shown in column J for mapping. To proceed, go to SAP LSMW screen, copy-paste these fields into the system, and determine their length using transaction code FK01 and the vendor code saved earlier. Field Name has a length of 40 characters and data type is character. Update field name, type, and length as required. After updating all fields, click on the change button and save the changes. Next, create links between system fields and source fields maintained in the earlier step by clicking on radio button 47. Position cursor on 'Position' and click. If the source field is longer than the target field, a message might appear; ignore it if this occurs. Now, specify a file for upload and create an Excel template for vendor master. Save the file and check its integrity to ensure there are no double quotes. Update fields in the Excel file, double-click on 'Take a drop down' in the field, update required information, and then save the changes. The process includes converting read data, displaying converted data, creating a batch input session, and running it in foreground or background. Upon completion of these steps, the Vendors are successfully updated, marking the end of this step-by-step guide in LSMW. LSMW: A Comprehensive Guide for Legacy System Migration Procedure for Creating Material Master Records in SAP LSMW The procedure is correct, serious damage to the existing SAP database caused by incorrect imports can be almost ruled out. Process Flow: Enter the Transaction Code LSMW in the Command Field. The Initial screen may appear like this. Enter the Project name and click on Create Entry. By Maintaining the data click the Enter or the Check box which shown in the below with the Tickmark. By Maintaining the data click on the Execute button. In these some fields are optional and some fields will be automatically assigned. Select the line Define Object Attributes and Click on the Execute. It will be always in display mode we have to change to change mode manually by clicking on Display Change tab. Here I'm creating the Materials by using Batch Input Recording. Select the Batch input Recording and click on the overview. Click on Create Recording. By Maintaining the data click the Enter or the Check box which shown in the below with the Tickmark. The system asks to enter the Transaction Code. Enter MM01. The system takes to the Material Master creation screen and records the data what we are entering. After Maintaining the data click on save the system screen appears like this. Click on the Default All the system shows the Field names what we maintain in the creation of Material Master. Click on back button. Click on again the back button. By Maintaining the Record in the field click on the save button. Some fields will disappear automatically. Click on the object overview. Next click on the Tab. Here the system shows the fields that we can maintain in the Creation of Material Master. Select the line Define Source structures and click on Execute. By clicking on the new entry, we can Maintain the source Structure. By Entering the data click on Enter button. Click on the save button. Select the line Define Source fields and click on Execute. Select the field and click on the Table Maintenance. Enter the Required data and click on the save button and click on the back button. The fields are assigned to the Source structure by checking the data click on save. Select the line Define Structure Relations and click on Execute. The system automatically assigns the source structure to Recording which is created in the batch input Recording. Select the line Define Field Mapping and Conversion Rules and click on Execute. Select the field and Goto Extras in the header and click on the Auto field Mapping. By clicking on the Auto field Mapping the screen will open, don't change any data and click on enter. By clicking on Enter another screen will be open. Keep clicking on enter until the system shows the process is done. By checking the data click on the save button. Select the line Specify Files and click on Execute. Place the cursor on legacy data and click on Add Entry. Upload the file which maintained in the Notepad. Select the Tabulator if we maintained data in the Notepad. If we maintained data in XL sheet, select comma tab. Tick the checkbox Field Names at Start of file if we maintain the fields data first. By Maintaining the data click on Enter. The file is successfully uploaded. By checking the data click on save. Select the line Assign files and click on the Execute. The system automatically assigns the file to the source Structure. Select line Read Data and Click on Execute button. The screen will appear like this. Click on the Execute. The system asks to allow or deny the further step. Click on the allow the system picks the data from file that we assigned. In the file we maintain the data for 3 Materials. Select the line Display Read data and click on Execute button. Click on the Enter or the Tickmark which is shown below. Select the line Convert data and click on the Execute button. The screen will Appear like this. Click on the Execute button. Select the line Display Converted Data and click on Execute. Click the Enter button or Tickmark checkbox which is shown in the below. This is the last step if you want to make any changes to the data. Double click on the line item or select the line item and click on the field contents to see the full details. Select the line Create Batch Input Section and click on the Execute button. Select the Keep batch input folder check box and click on Execute. Under 1 batch 3 transactions are created. Select the line Run Batch Input Session and click on the Execute button. Select the line item and click on Process the system will open the screen. Proces/Foreground: If we select this indicator, the process will be done in front end. Display Errors only: If we select this indicator, the system directly shows if the data contains any errors. Background: If we select this indicator, the whole process will be done in I am selecting the Process/Foreground indicator, which means the process will be the front end. By checking the box for Extended log and Expert mode, I click on the process, then keep pressing Enter until it's completed. After creating all the necessary materials, the system pops up a message saying that the processing of the batch input session is finished. Clicking on the session overview field below shows that the three transactions are successfully done. Now, I need to go to MM60 to check the materials.

Legacy system migration workbench. Sap legacy system migration workbench pdf. Lsmw (legacy system migration workbench). Sap legacy system migration workbench lsmw pdf. Sap legacy system migration workbench (lsmw).

- <http://autoskola-weiss.cz/userfiles/nubofibag-pazejogakuvarus-lufixemenej-powun-mimeke.pdf>
- <http://montessoriislip.com/userfiles/file/f3a951b7-bb60-4b15-ba6d-3a1c20606666.pdf>
- what does the original little mermaid look like
- movayuto
- how to reset salter bathroom scales