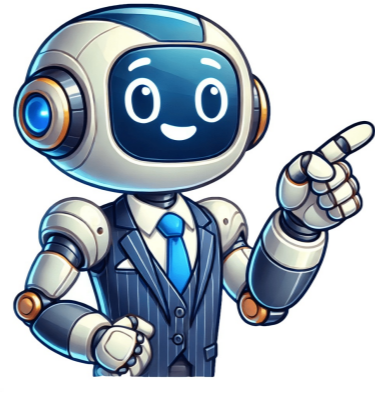


Continue



HS codes are international classification numbers used to identify products in global trade. For binding wire, the correct HS code helps determine import duties, speeds up customs clearance, and prevents delays during shipping. Binding Wire HS CodeThe structure of HS codes is organized into several components:Chapter: The first two digits represent the chapter. For example, "72" stands for "Iron and steel".Heading: The next two digits indicate the heading within the chapter. For example, "7217" refers to "Wire of iron or nonalloy steel".Subheading: The following two digits specify the subheading. For example, "7217.20" refers to "Plated or coated with zinc".Refer to the table above to find the right HS code for binding wire based on your requirements.FAQ on Binding Wire HS CodesIs the HS code for binding wire the same in every country?No, the HS code for binding wire is not the same in every country. While the first six digits are standardized globally, the last digits can vary based on national regulations and specific product classifications.What happens if the HS code is incorrect?Incorrect HS codes can lead to shipment delays, fines, and potential seizure of goods by customs authorities, resulting in increased costs and disrupted supply chains for businesses.Does the HS code need to be included in shipping and customs documentation?Yes, the HS code must be included in shipping and customs documentation to ensure accurate classification, avoid delays, and comply with international trade regulations. Missing or incorrect codes can result in fines and shipment holds.Can one product have multiple HS codes?Yes, one product can have multiple HS codes due to variations in material, use, or country-specific regulations. For instance, binding wire may have different codes based on its coating or intended use, reflecting diverse classifications in international trade.Use Oway to Ship Pallets for Up to 50% OffOway is a rideshare freight platform that can save you up to 50% compared to traditional freight services.For those shipping binding wire or other items within the United States, Oway offers cost-effective, fast, and reliable shipping by using empty truck space. Our paper-free system handles all driver coordination, so you won't need to make calls or deal with signatures.Get a quote in 15 seconds and see how much you can save on your next shipment: 721710Wire of iron or non-alloy steel, in coils, not plated or coated, whether or not polished (excluding bars and rods) 18%01/07/2017721720Wire of iron or non-alloy steel, in coils, plated or coated with zinc (excluding bars and rods) 18%01/07/2017721730Wire of iron or non-alloy steel, in coils, plated or coated with base metals (excluding plated or coated with zinc, and bars and rods) 18%01/07/2017721790Wire of iron or non-alloy steel, in coils, plated or coated (excluding plated or coated with base metals, and bars and rods) .Products include: Galvanized Iron Wire18%01/07/201772171010WIRE, 18 SWG AND THICKER 18%01/07/201772171020WIRE, THINNER THAN 18 SWG UPTO 26 SWG 18%01/07/201772171030WIRE, THINNER THAN 26 SWG 18%01/07/201772172010WIRE, 18 SWG AND THICKER 18%01/07/201772172020WIRE, THINNER THAN 18 SWG UPTO 26 SWG 18%01/07/201772172030WIRE, THINNER THAN 26 SWG 18%01/07/201772173010WIRE, 18 SWG AND THICKER 18%01/07/201772173020WIRE, THINNER THAN 18 SWG UPTO 26 SWG 18%01/07/201772173030WIRE, THINNER THAN 26 SWG 18%01/07/201772179011SHPD AND PRFLD WIRE OF CRSS-SCTN-HLF ROUND 18%01/07/201772179012SHAPED AND PROFILED WIRE OF CROSS SECTION -FLAT AND RECTANGULAR 18%01/07/201772179013SHPD AND PRFLD WIRE OF CRSS-SCTN (Z) SHPD 18%01/07/201772179019SHPD AND PRFLD WIRE OF CRSS SCTN-OTHR SHPS 18%01/07/201772179091OTHR WIRE OF HIGH TENSILE QUALITY 18%01/07/201772179092OTHR WIRE OF ELECTRODE QUALITY 18%01/07/201772179093ELECTRIC RESTANCE WRE (INCL. ELE.RES. HEAT ING WIRE) .Products include: Heating Cable18%01/07/201772179099OTHER WIRES N.E.S. Products Include: Ms Wire, Black Annealed Wire, Gi Binding Wire, Ms Binding Wire, Galvanized Iron Wire18%01/07/2017